



Register IVZ-Fahrzeuge

Alter des aktiven Fahrzeugbestands Nach Fahrzeugart

Aktiver Bestand: Fahrzeug in Verkehr.

Alter: Seit Erstinverkehrsetzung in Jahren.

Veteran: Hier Fahrzeuge mit besonderer Verwendung «Veteranenfahrzeug» (Feld 17 im Fahrzeugausweis).

Diagramme: Bestand pro Jahrgang (Erstinverkehrsetzung).

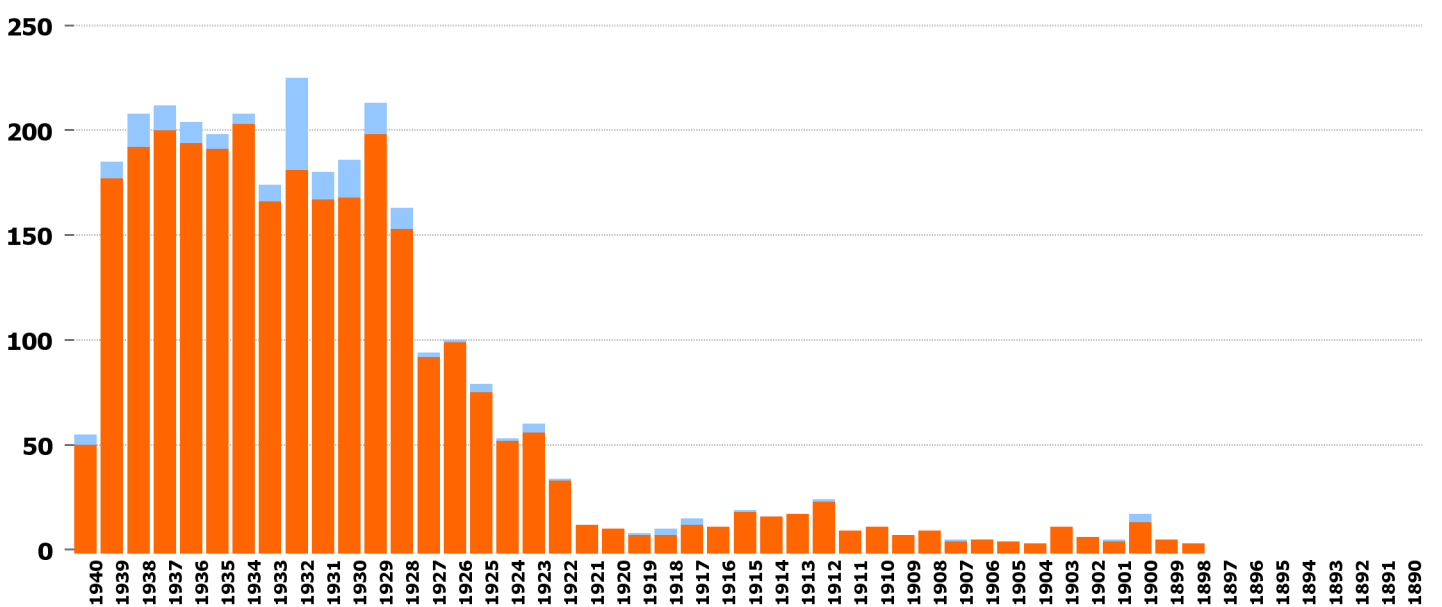
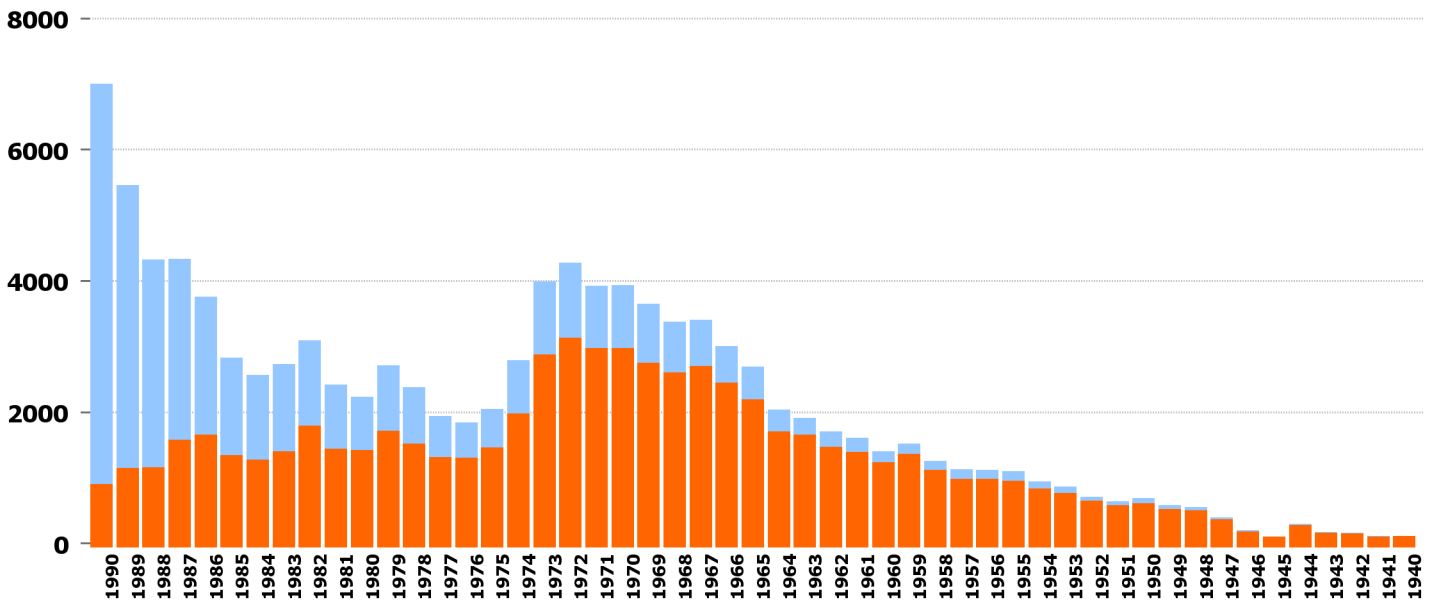
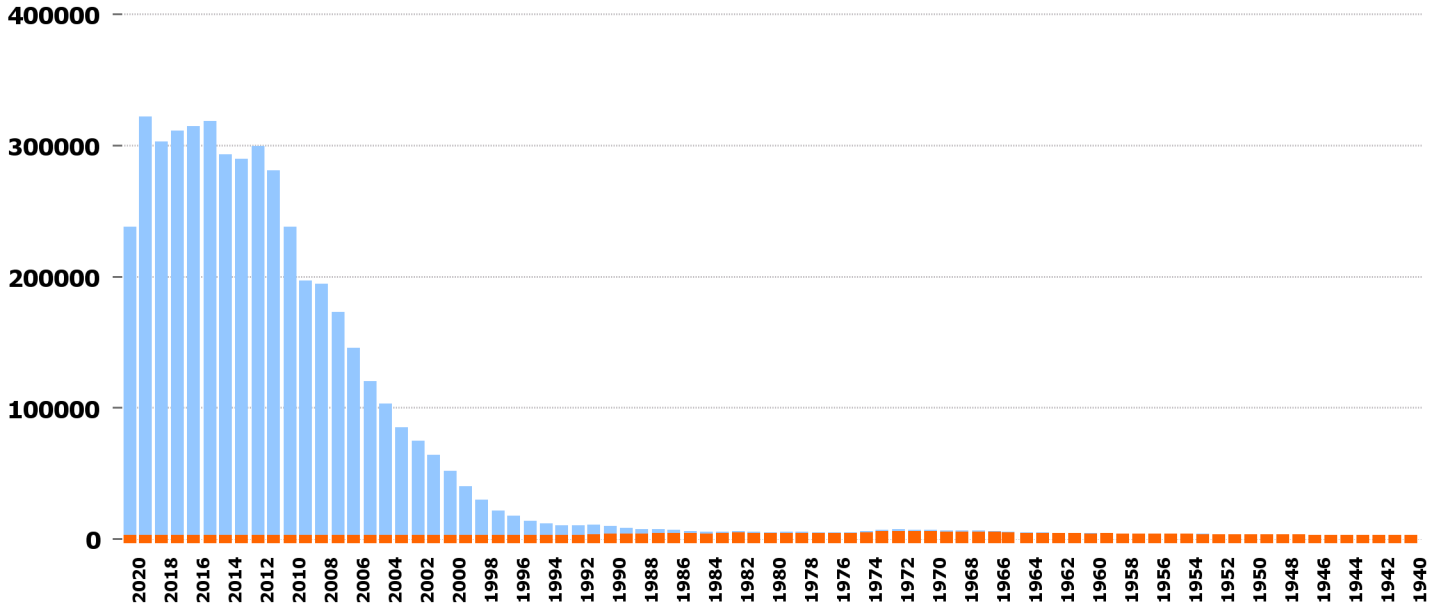
Veteranen jünger als 30 Jahre: Möglicherweise war das Erstinverkehrsetzungsdatum nicht ermittelbar und es kam ein Ersatzdatum, z.B. vom Import, zur Verwendung.

Bestand der 1900 bis 1920-er-Jahre: Teilweise Übertragungsfehler beim Datum, Fahrzeuge stammen oft aus den 2000 bis 2020-er-Jahren.

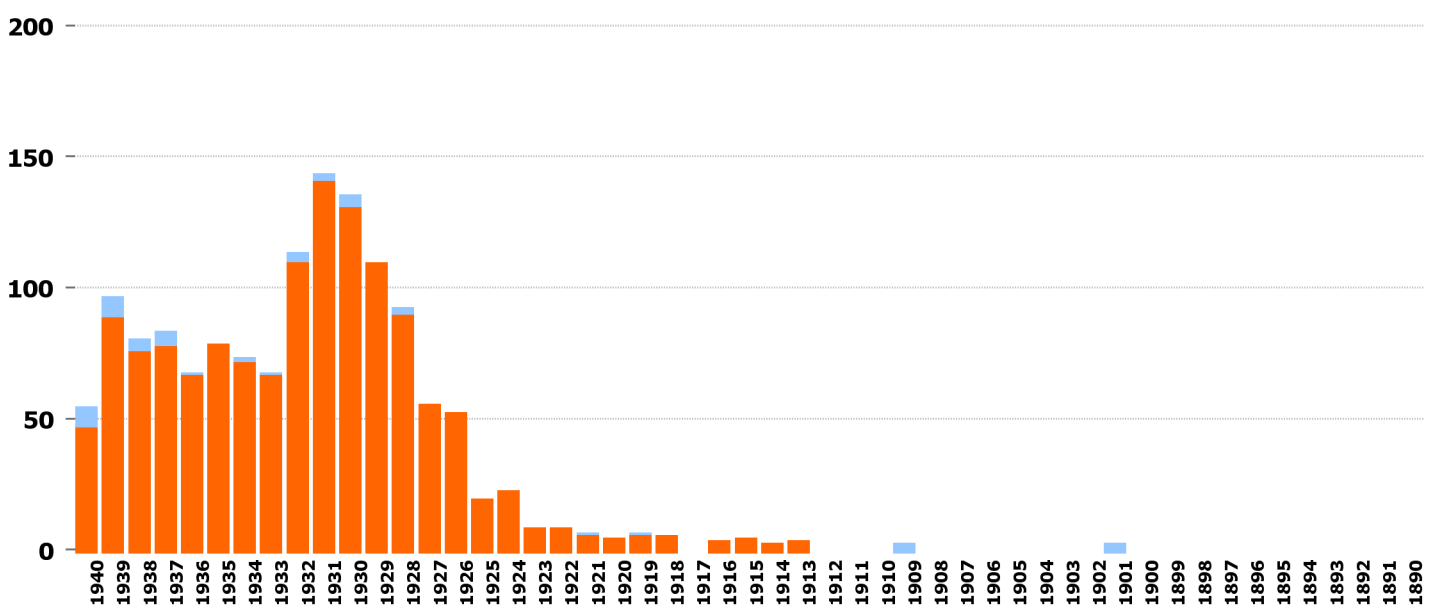
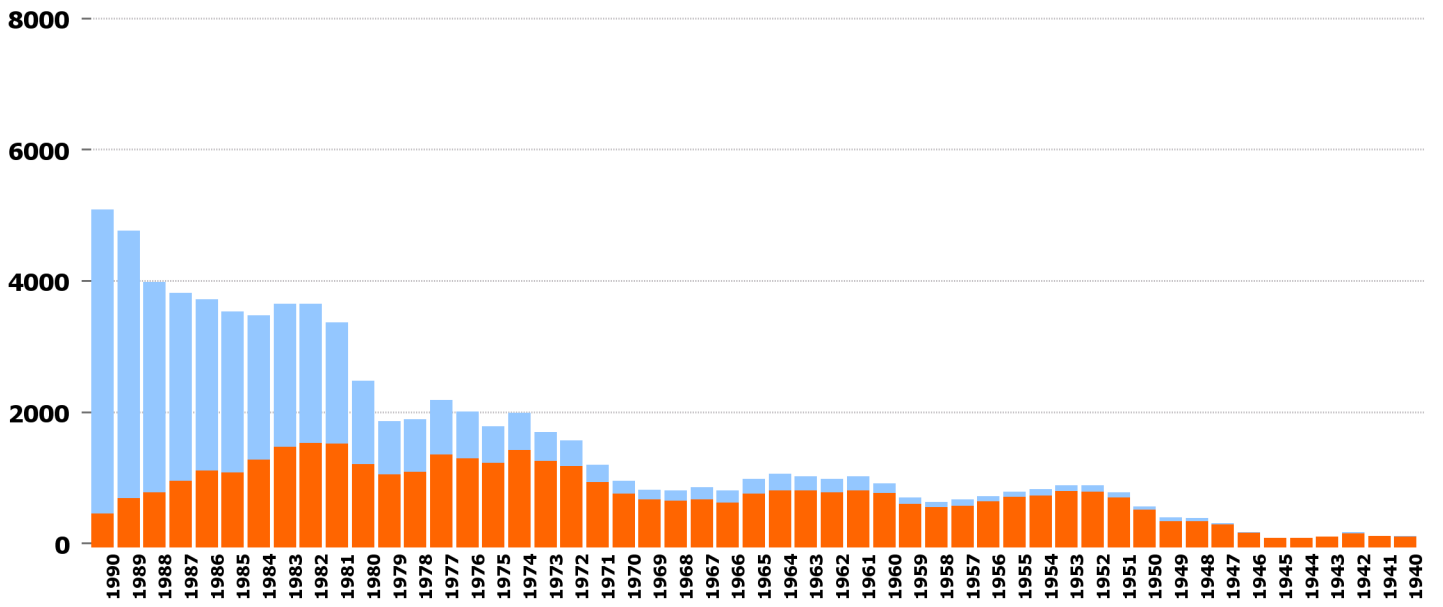
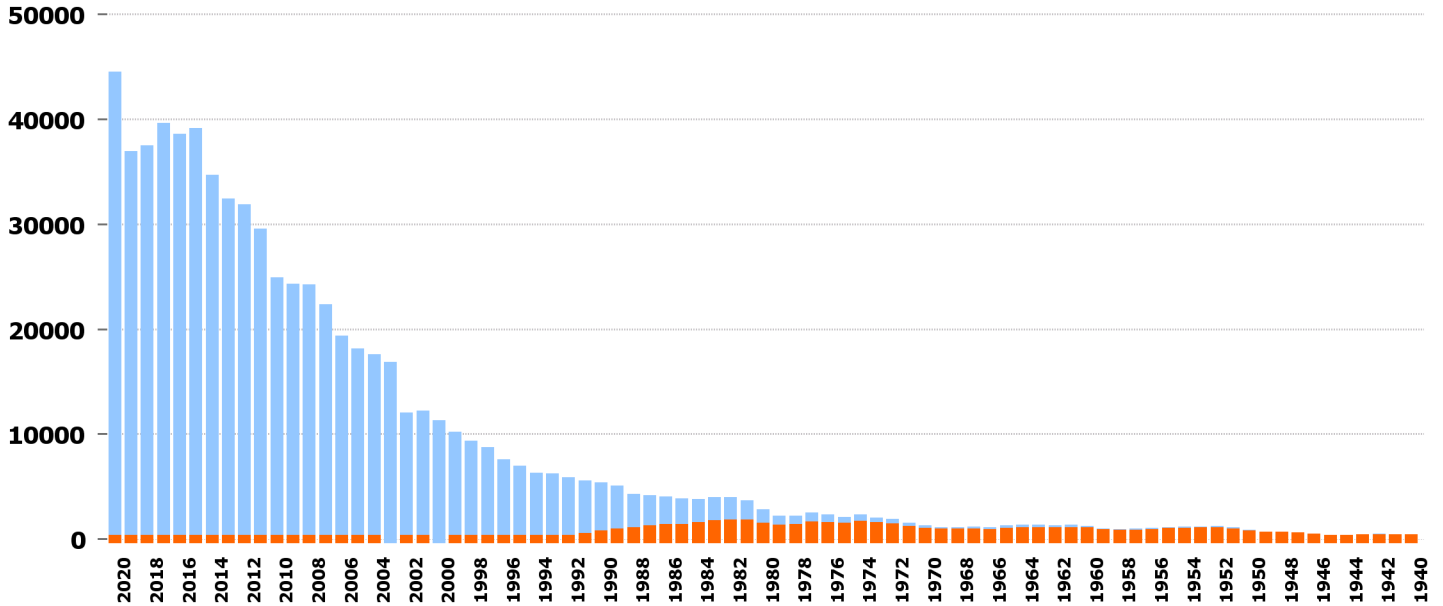
Stichtag: 30.09.2021

	Bestand	davon Veteran	Ø- Alter	Median Alter	vor 1990	vor 1980	vor 1970	vor 1960
01 Personenwagen	4 778 965	68 196	9.8	8.2	100 935	67 794	38 574	14 383
60 Motorrad	746 245	37 955	13.6	9.5	70 561	34 722	18 172	9 484
30 Lieferwagen	425 002	2 597	8.6	6.9	7 539	4 213	2 905	822
43 Landwirt. Trakt ...	145 542	2 863	28.5	27.4	62 497	36 730	16 924	4 921
10 Leichter Motorw ...	80 193	518	11.7	8.2	5 909	1 482	191	30
35 Lastwagen	49 541	447	10.5	8.0	1 458	516	266	164
51 Arbeitskarren	33 824	18	11.7	9.4	1 625	323	71	19
81 Landw. Motorkar ...	32 959	113	34.7	34.1	19 183	10 056	3 041	146
80 Motorkarren	23 012	98	15.5	11.0	3 146	1 590	863	280
61 Kleinmotorrad	18 940	1 055	16.5	15.7	1 758	1 302	680	258
66 Kleinmotorfahrz ...	17 922	19	8.2	7.1	21	18	17	12
50 Arbeitsmaschine	17 329	136	14.4	11.8	1 260	439	219	87
38 Sattelschlepper	13 104	35	6.6	5.3	61	24	4	4
52 Landw. Arbeitsk ...	11 343	5	13.8	10.8	1 030	253	52	7
83 Landw. Motorein ...	7 865	180	46.3	52.3	6 428	5 650	4 039	575
64 Kleinmotorrad-D ...	7 564	14	5.5	6.0	19	11	6	3
20 Gesellschaftswa ...	7 256	118	8.6	6.7	187	149	136	94
11 Schwerer Motorw ...	6 990	31	12.5	9.5	426	152	76	35
42 Traktor	6 525	103	11.3	7.2	479	324	243	102
21 Kleinbus	5 361	12	12.1	11.7	45	16	6	3
67 Dreirädr. Motor ...	4 575	220	11.7	7.1	379	227	185	93
63 Motorrad-Seiten ...	3 202	1 222	39.7	35.3	1 824	1 293	1 044	757
22 Gelenkbus	1 966		7.5	6.8				
68 Motorschlitten	1 014	1	13.8	12.8	14	2		
02 Schwerer Person ...	695	18	9.2	6.1	22	22	21	14
62 Motorrad-Dreirad	575	198	39.1	35.8	347	185	160	81
24 Gelenktrolleybus	321		12.2	11.8				
82 Motoreinachser	294	6	35.6	43.9	170	150	117	29
65 Leichtmotorfahr ...	256		5.1	2.4				
37 Schweres Sattel ...	72		8.8	8.1	1			
84 Landw. Kombinat ...	32	3	49.9	56.4	27	25	25	1
36 Leichtes Sattel ...	5		17.7	18.1				

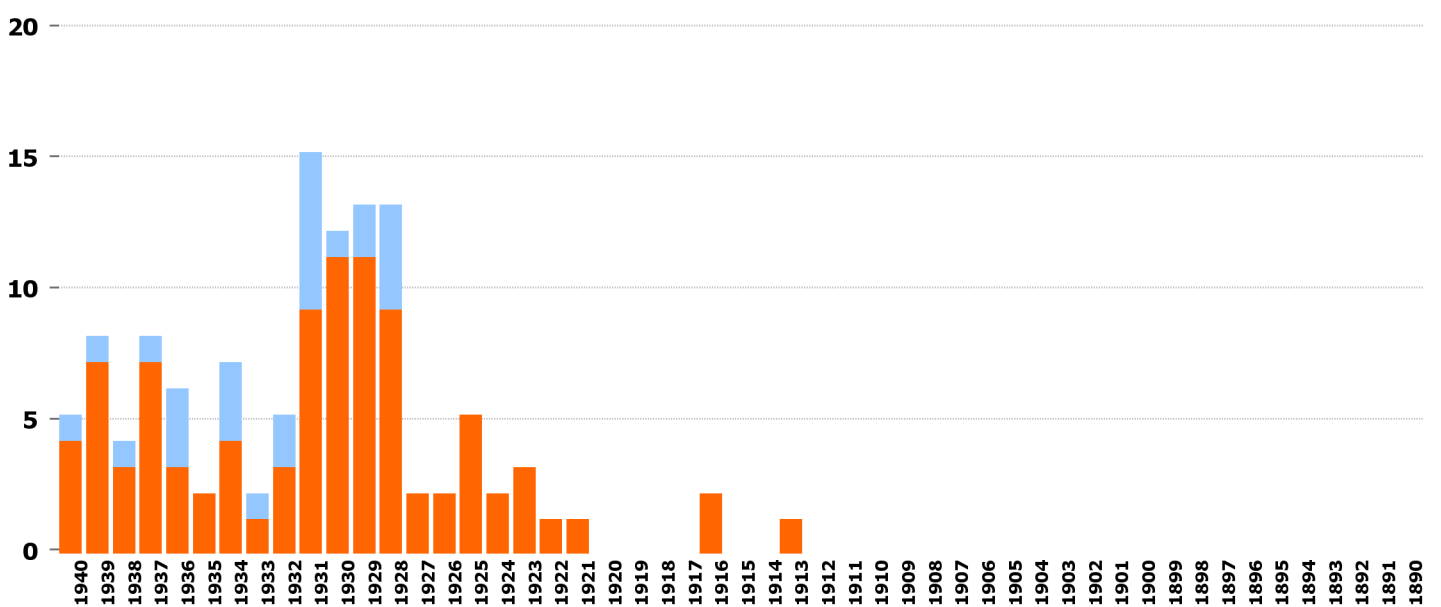
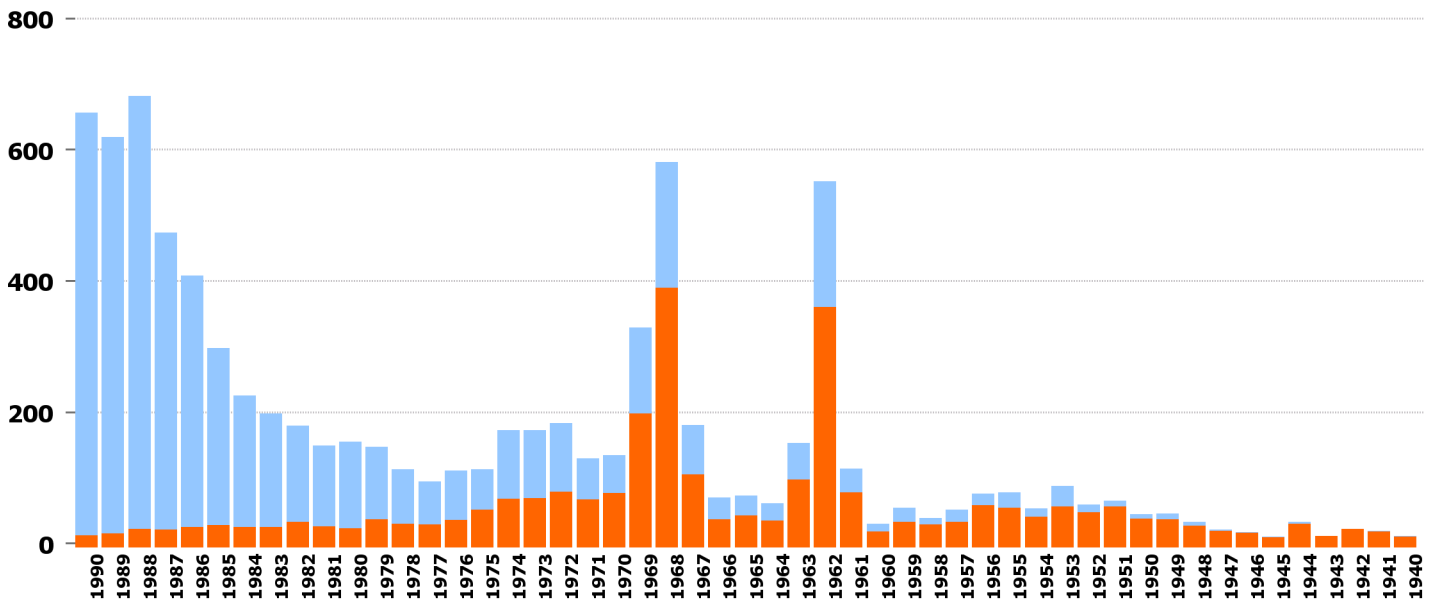
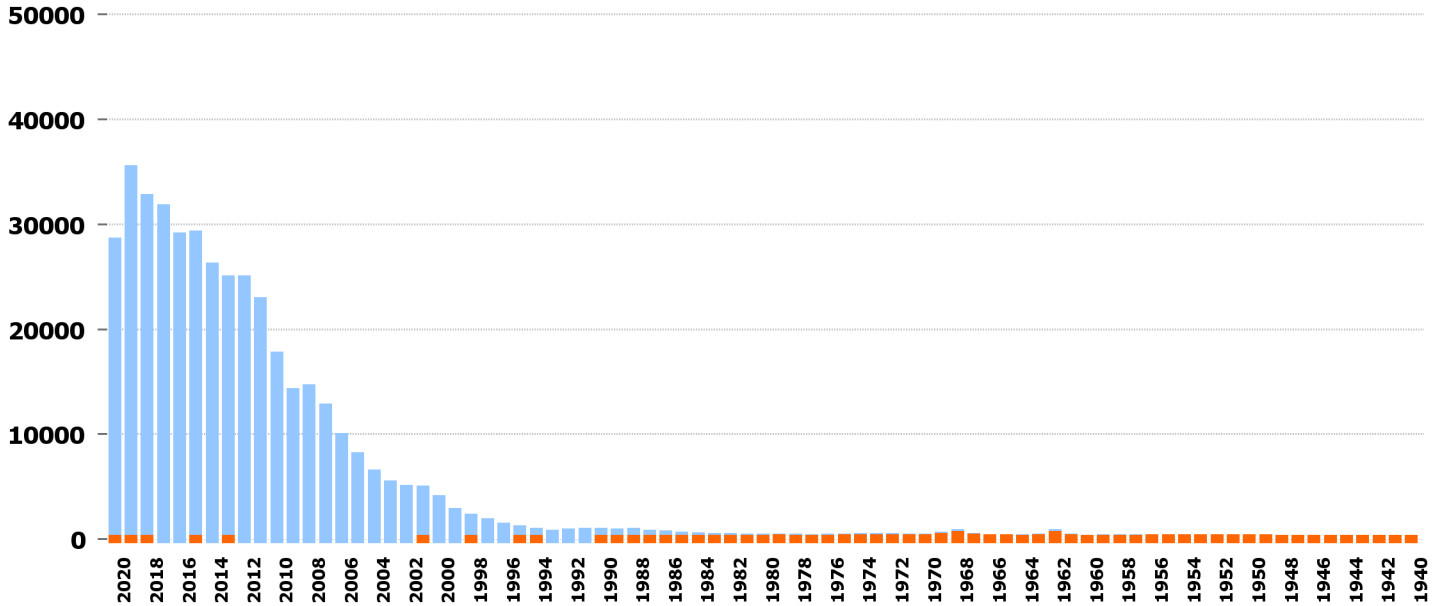
01 Personenwagen



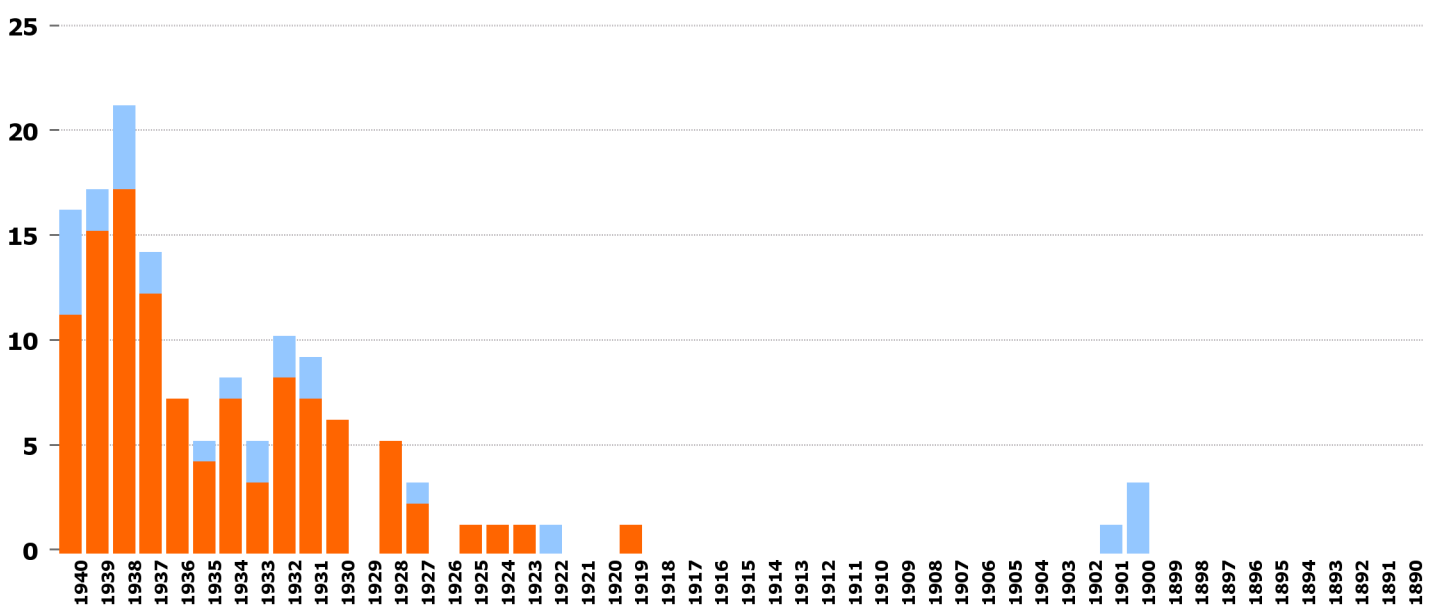
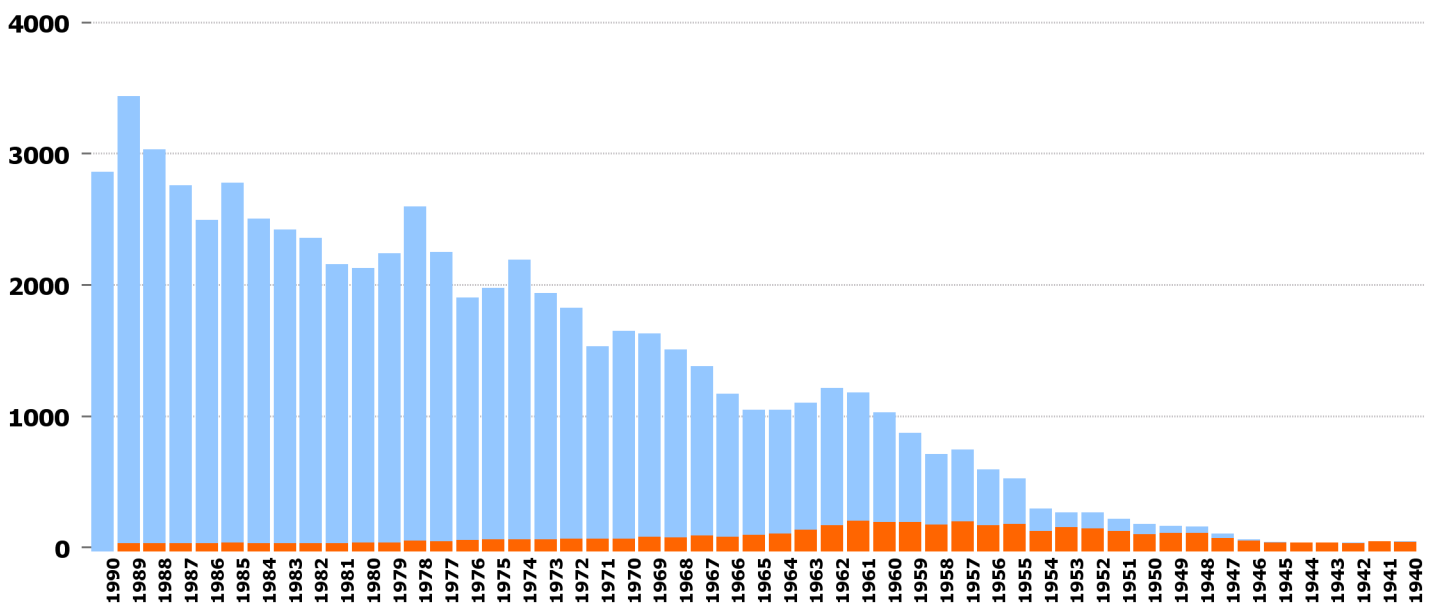
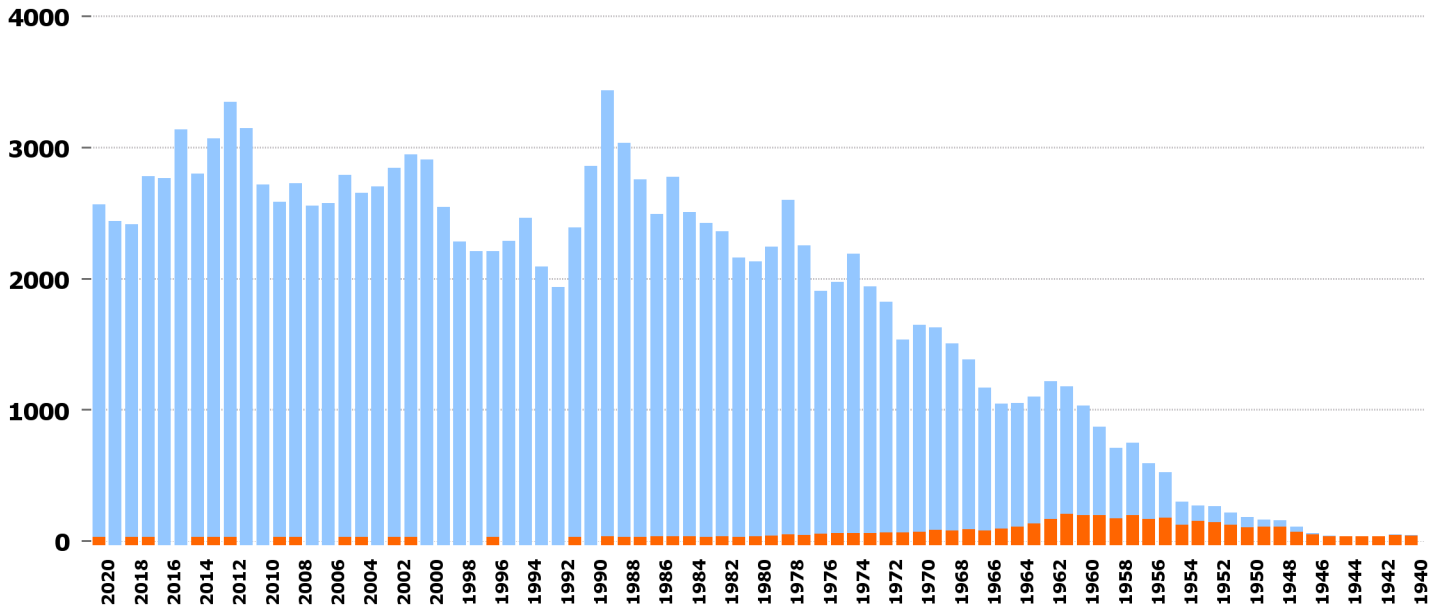
60 Motorrad



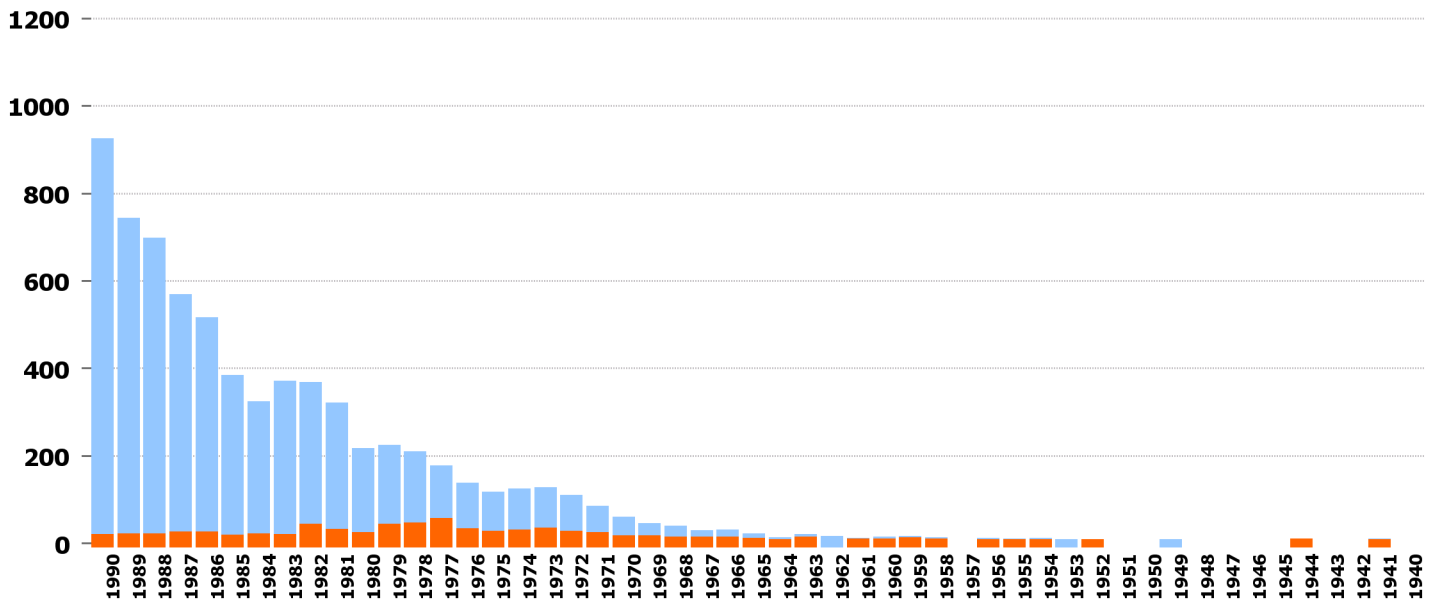
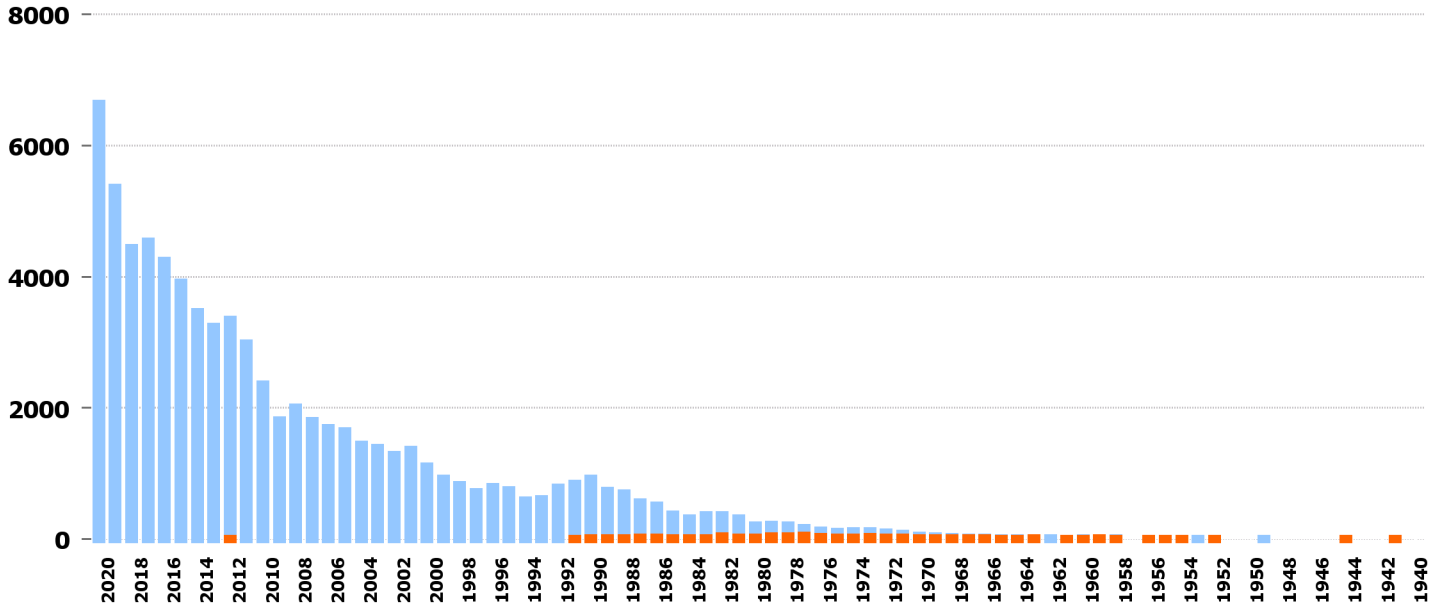
30 Lieferwagen



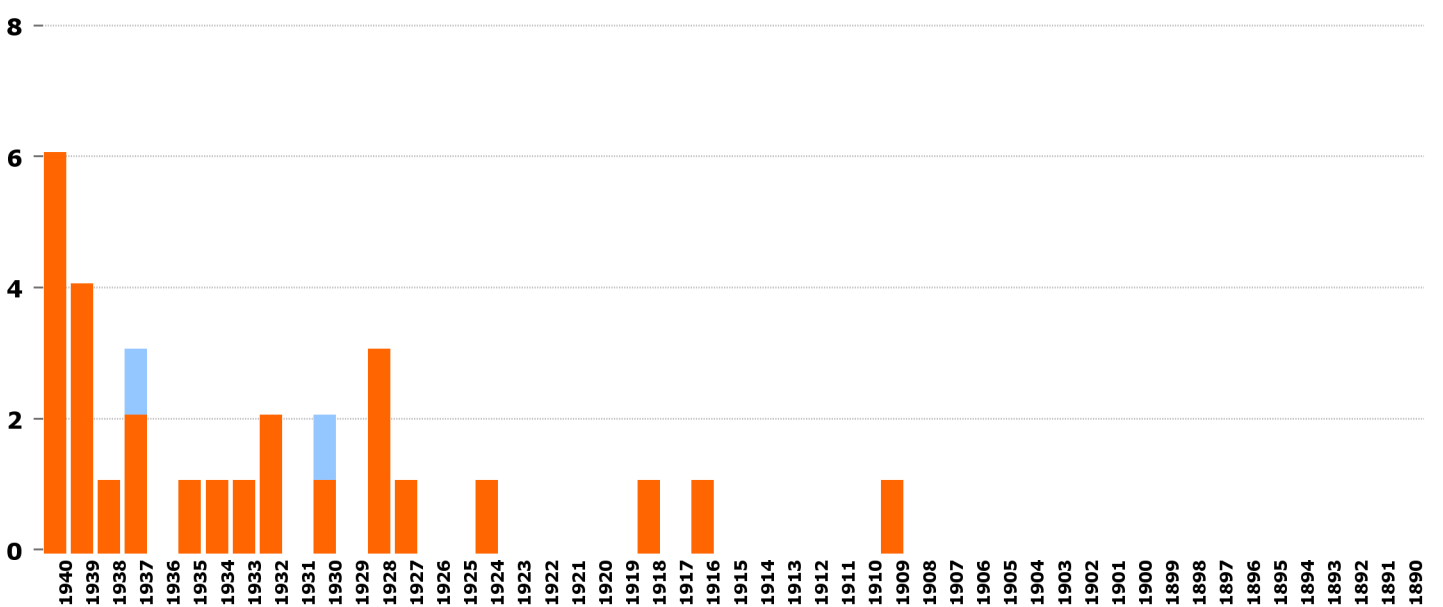
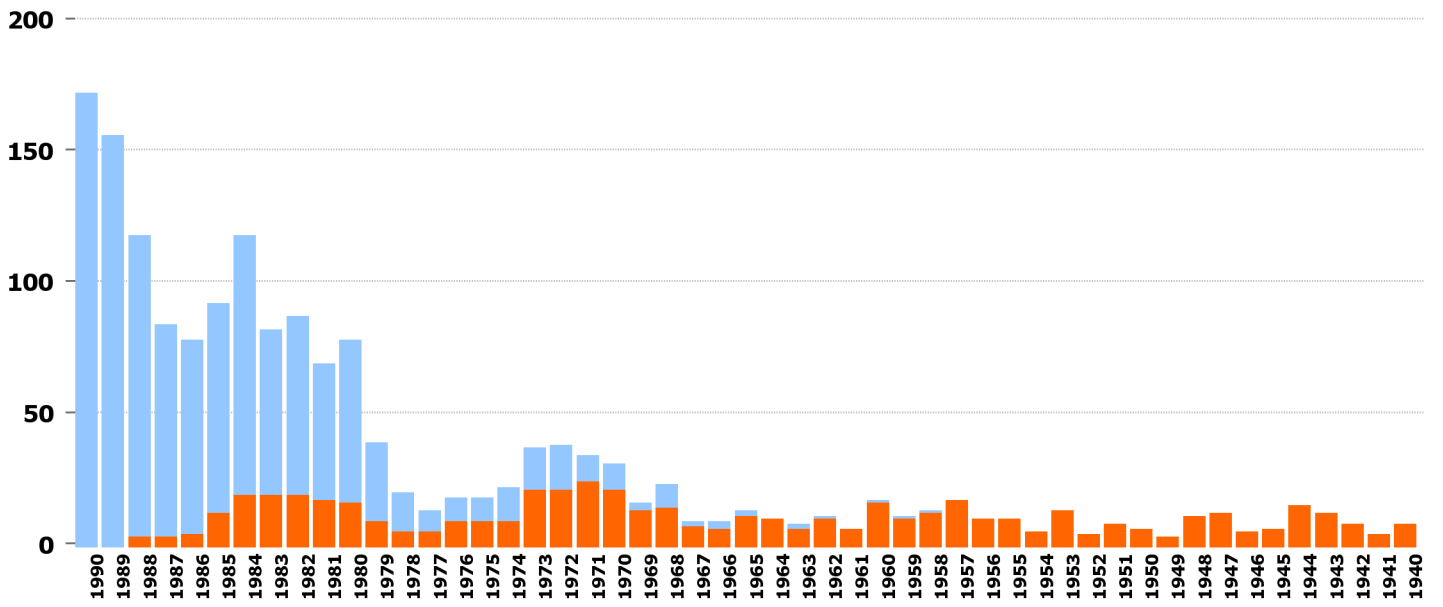
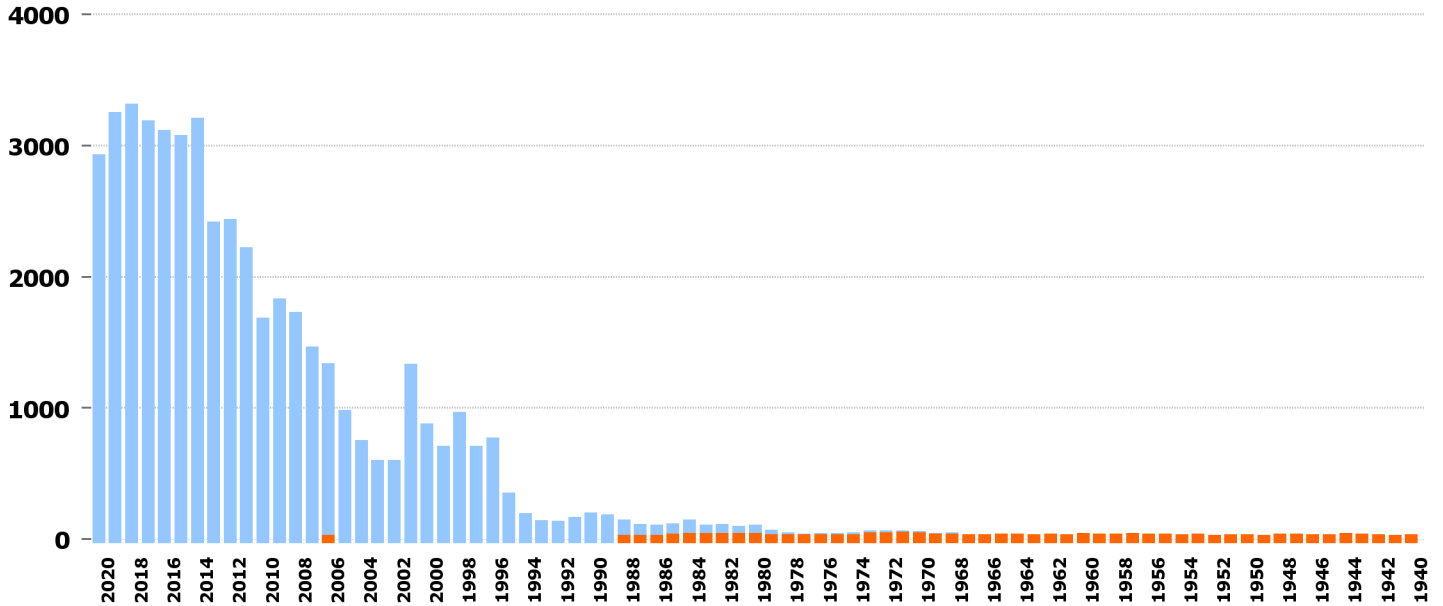
43 Landwirt. Traktor



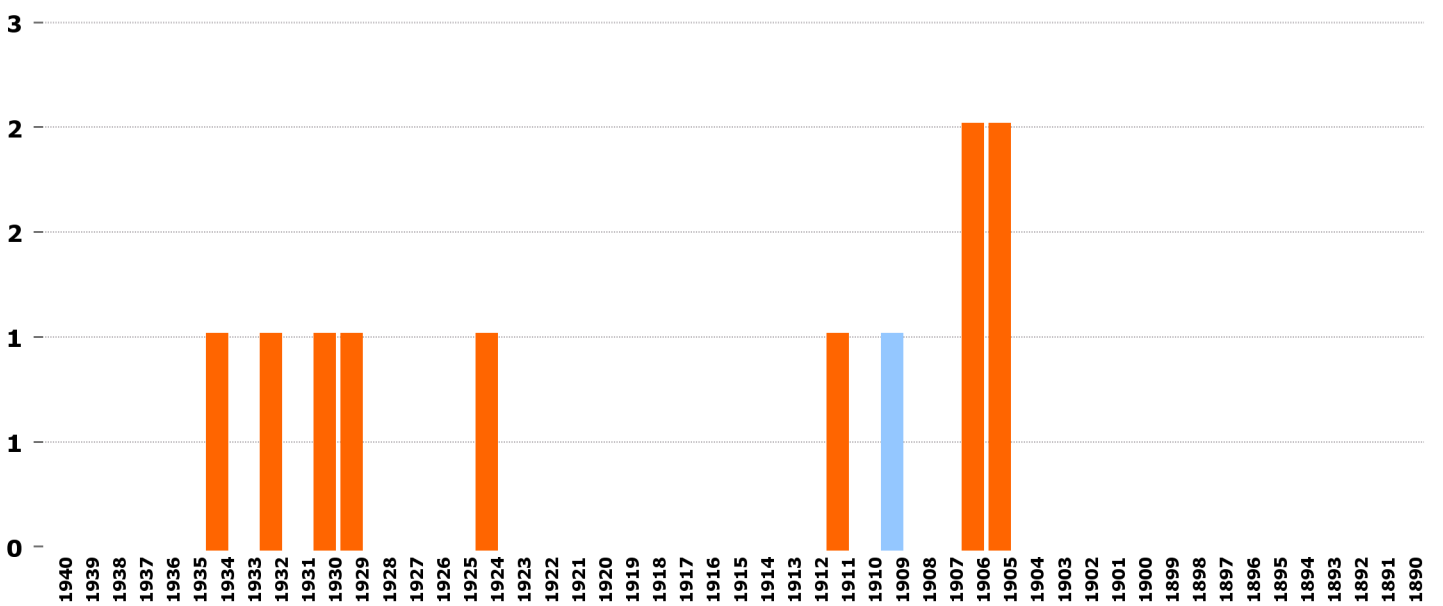
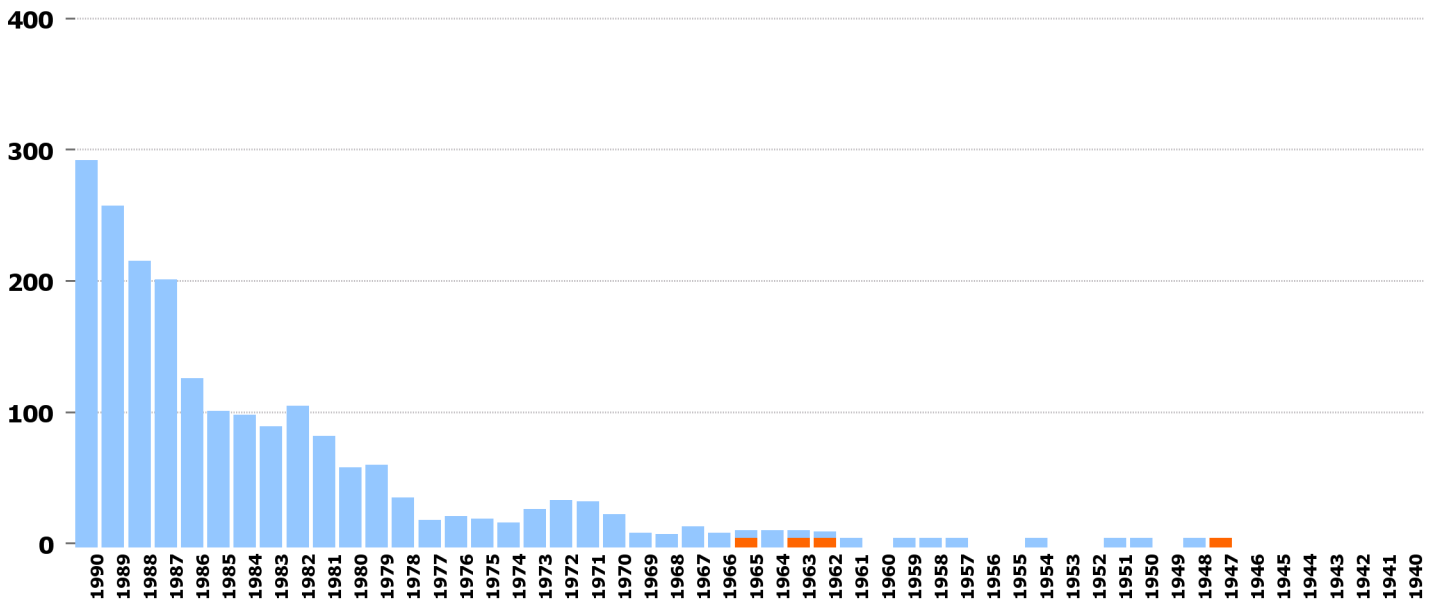
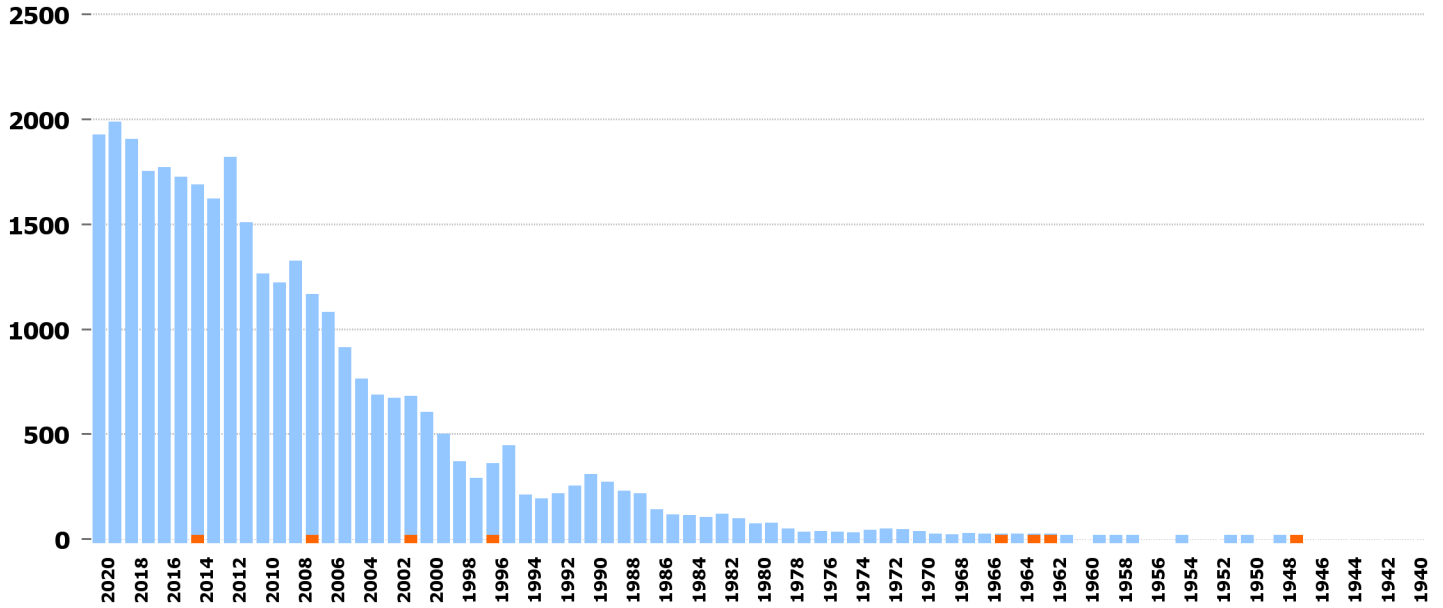
10 Leichter Motorwagen



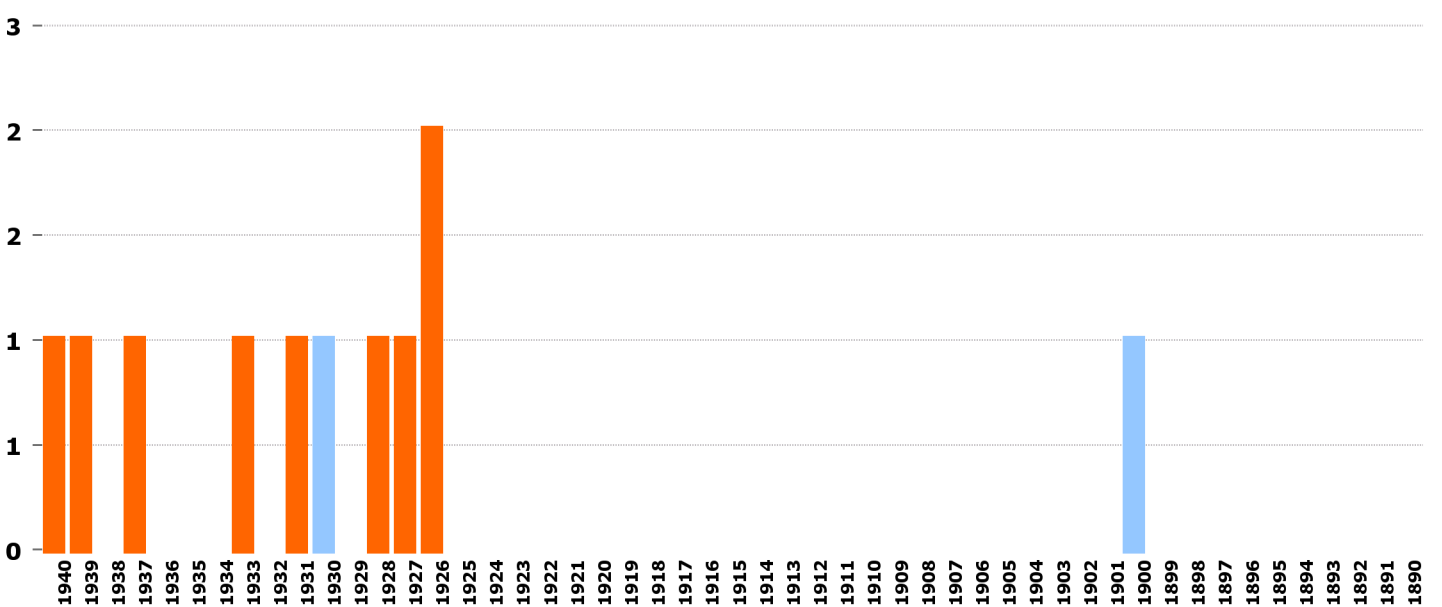
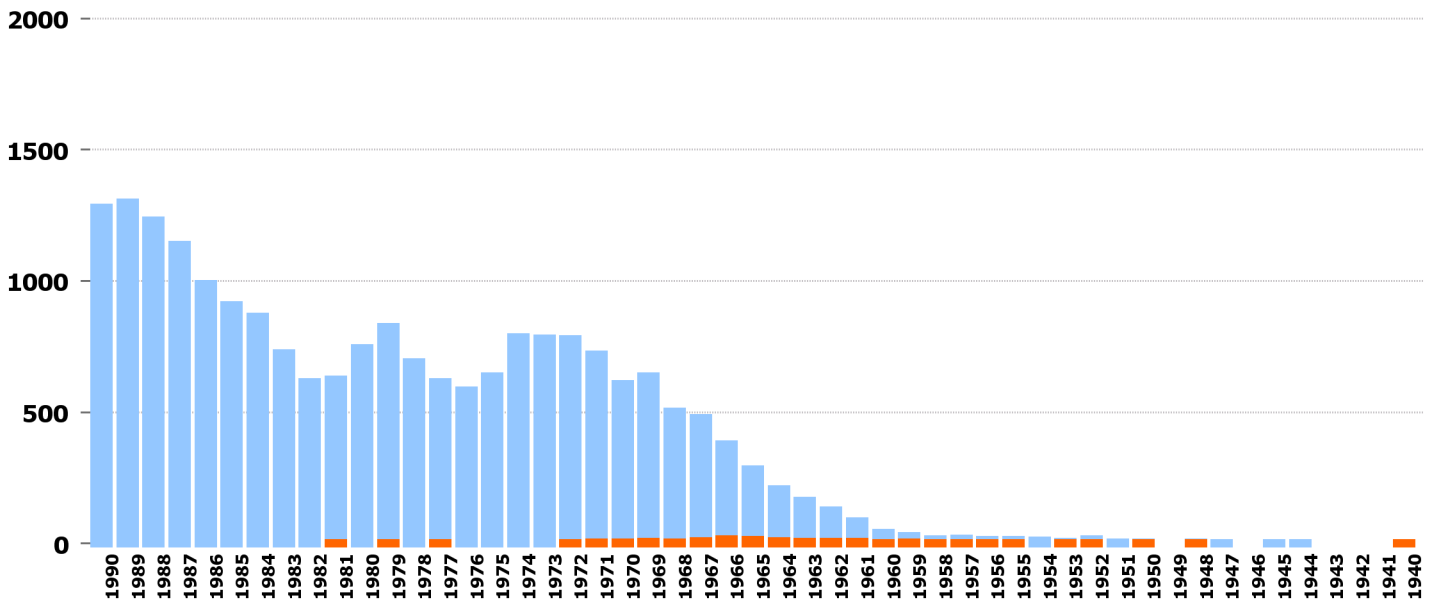
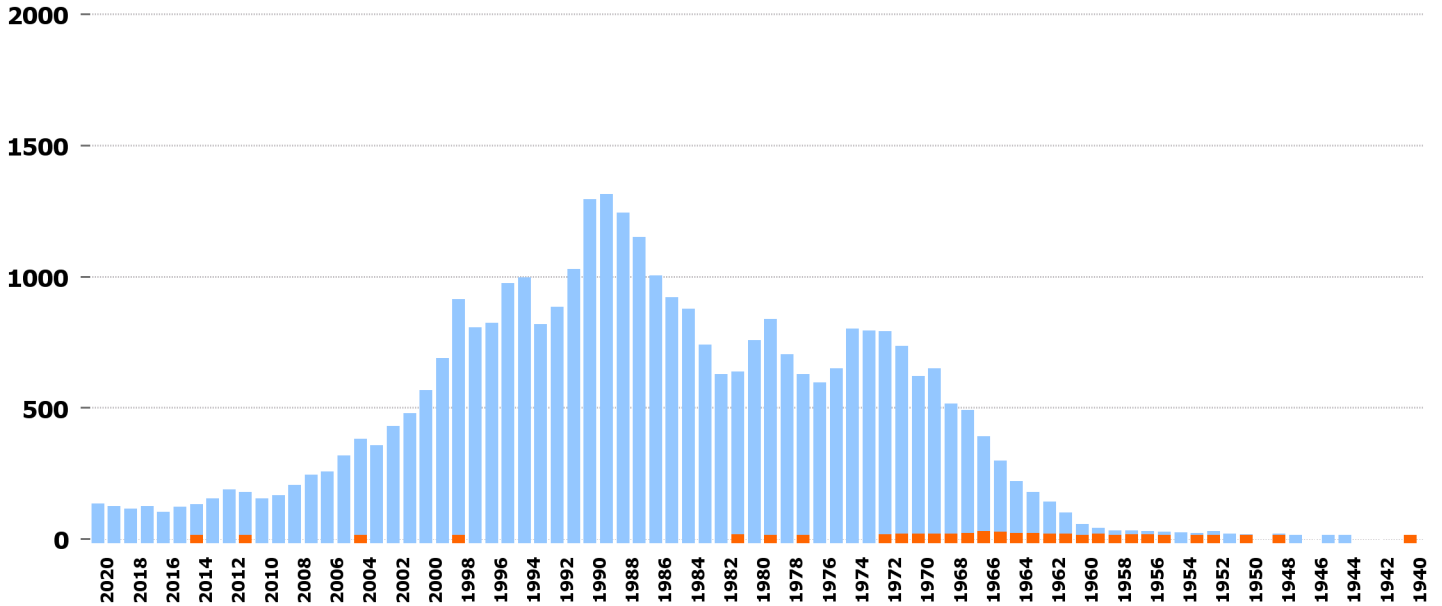
35 Lastwagen



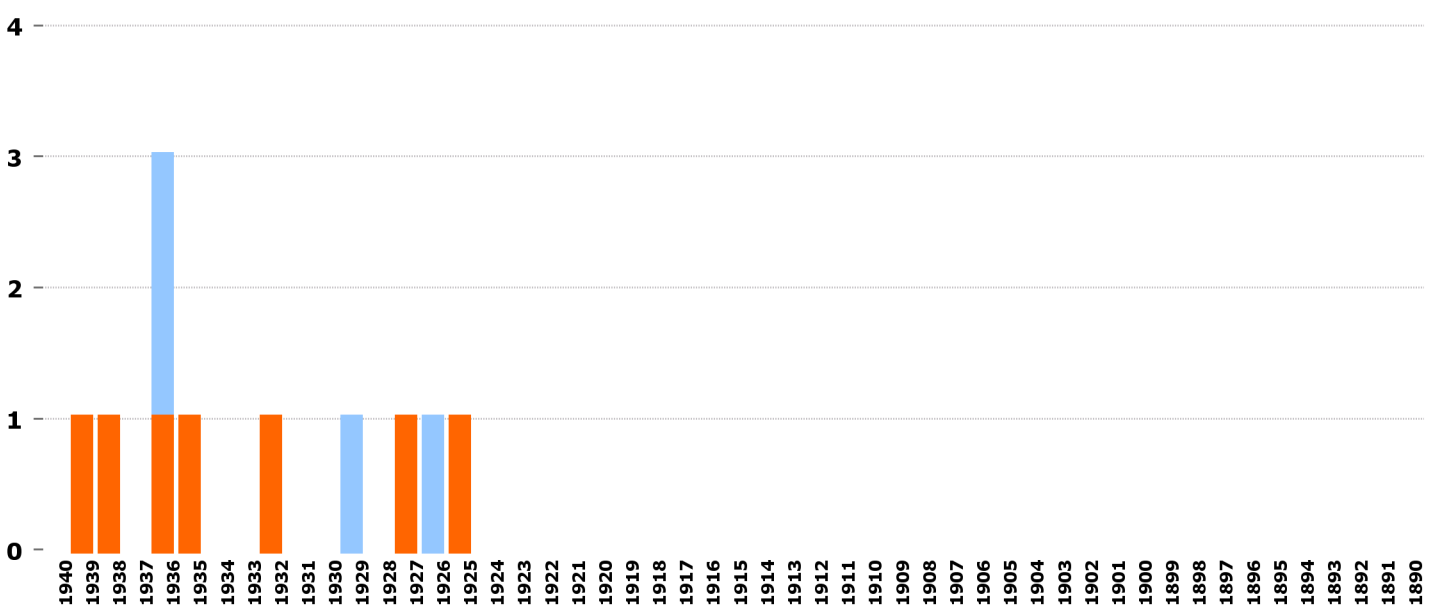
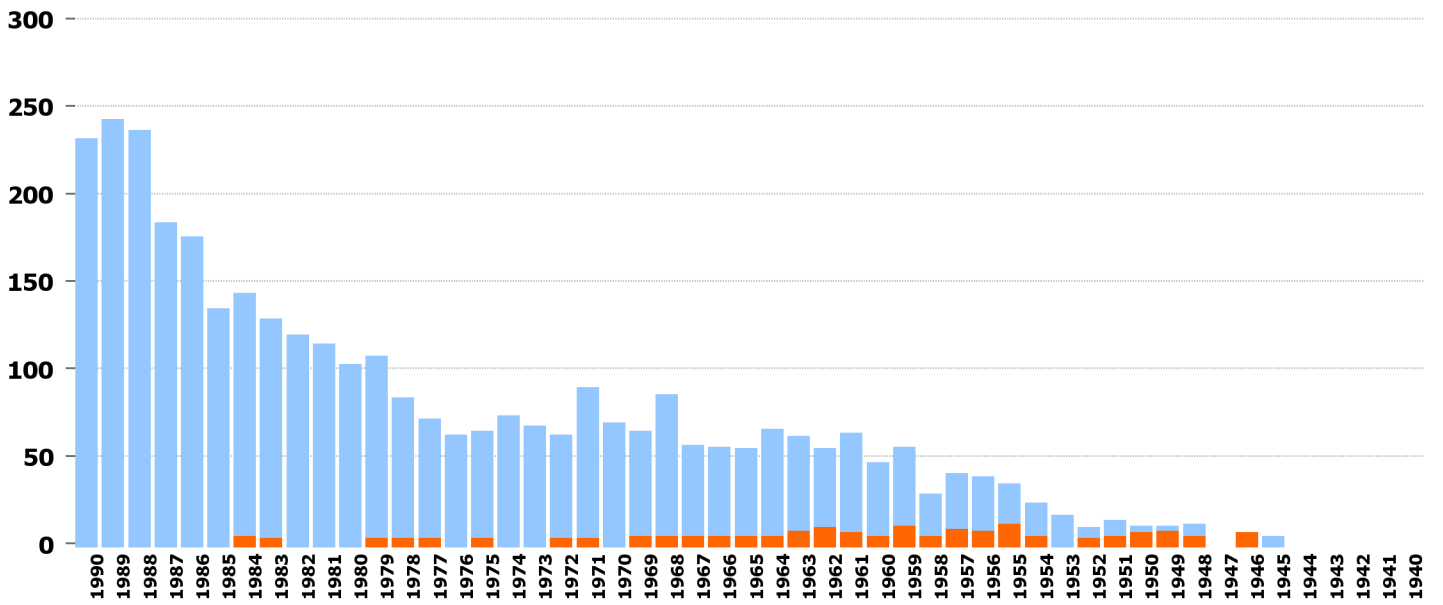
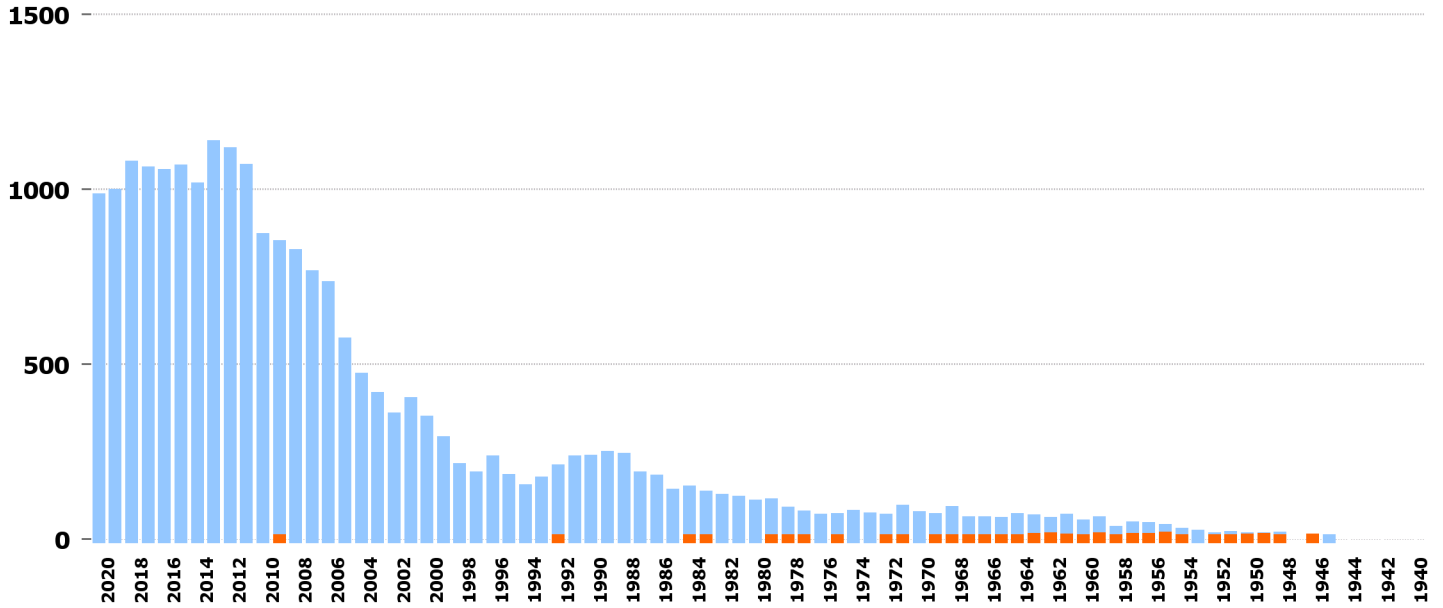
51 Arbeitskarren



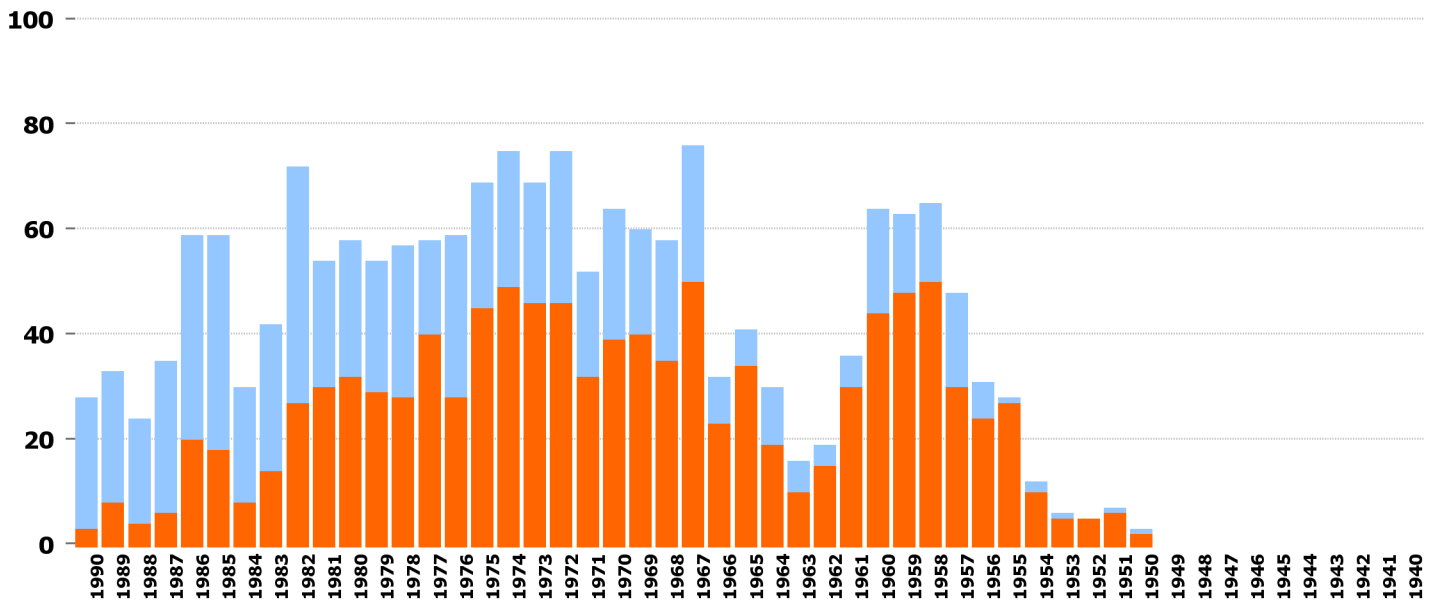
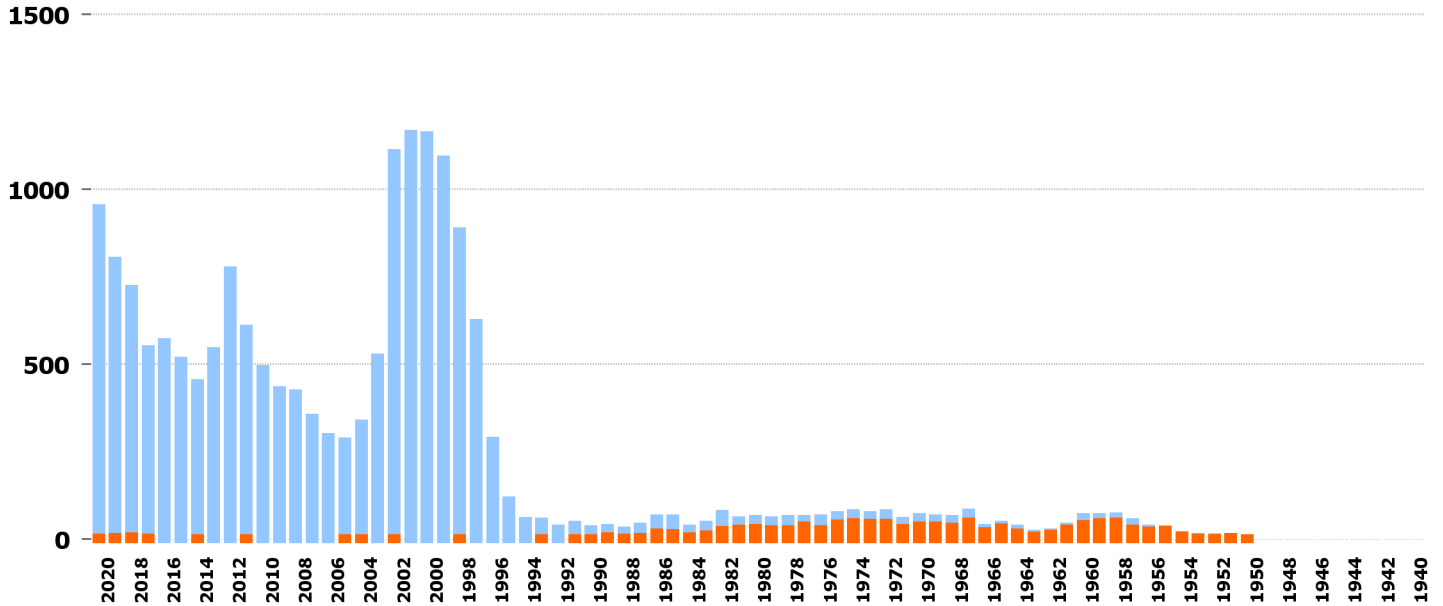
81 Landw. Motorkarren



80 Motorkarren

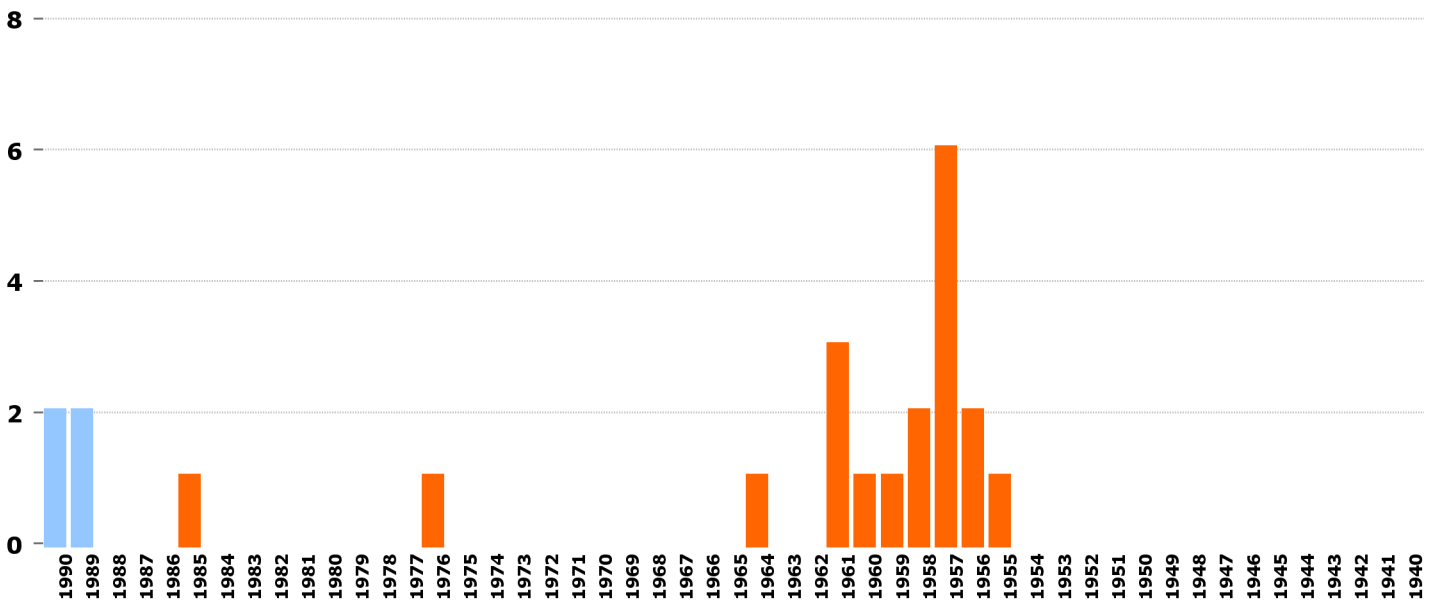
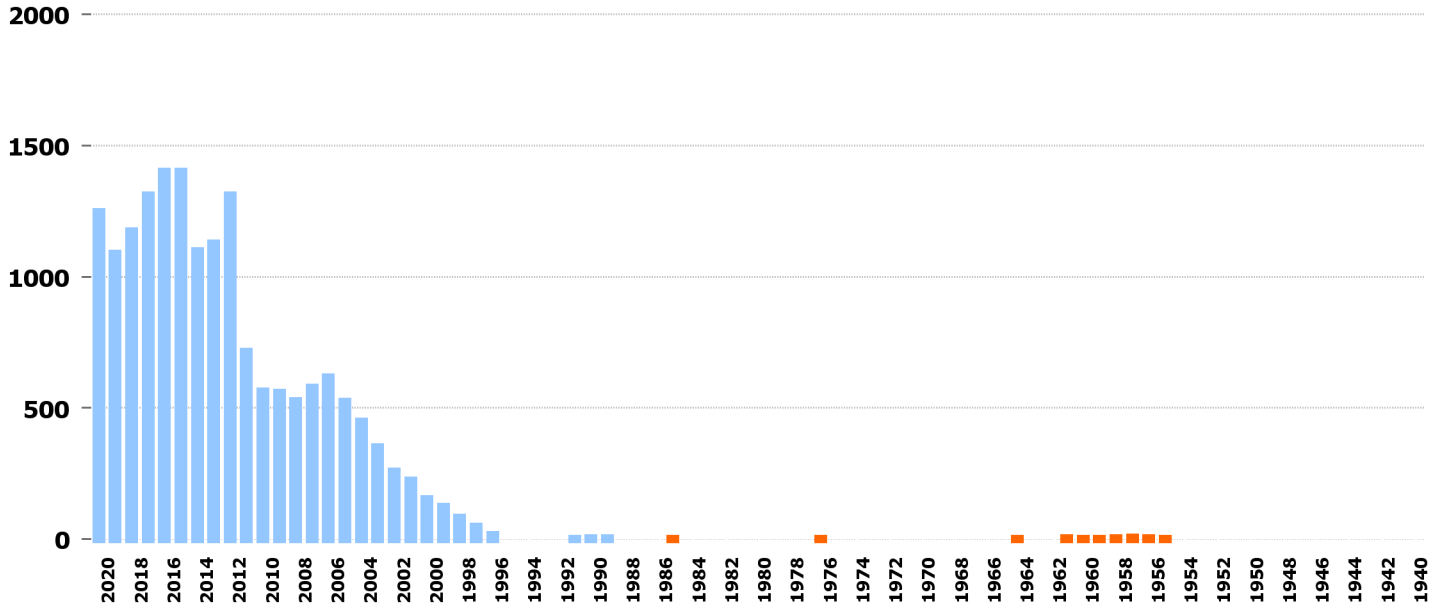


61 Kleinmotorrad



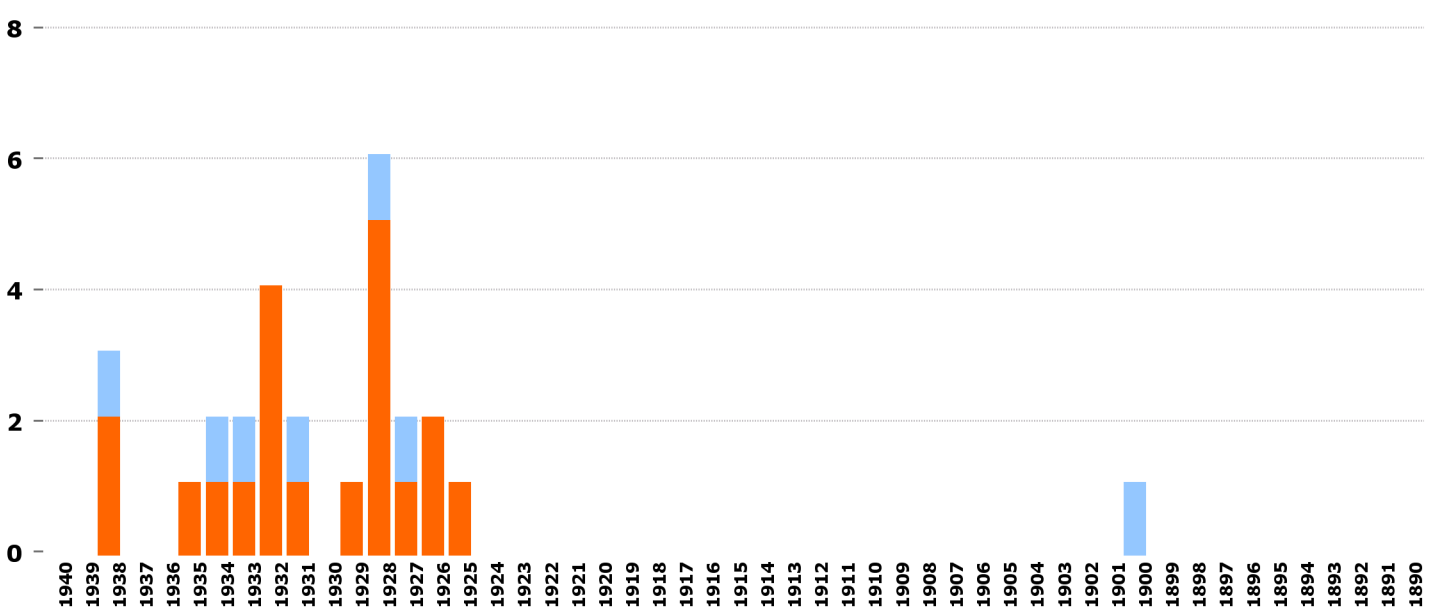
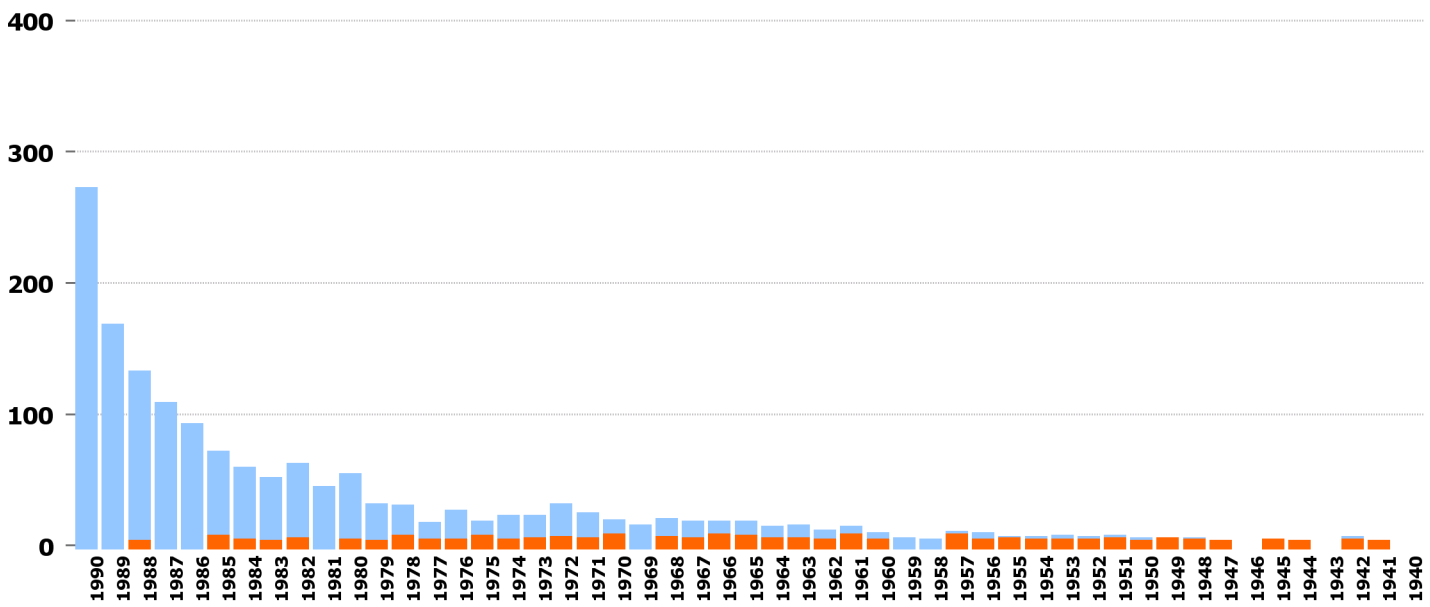
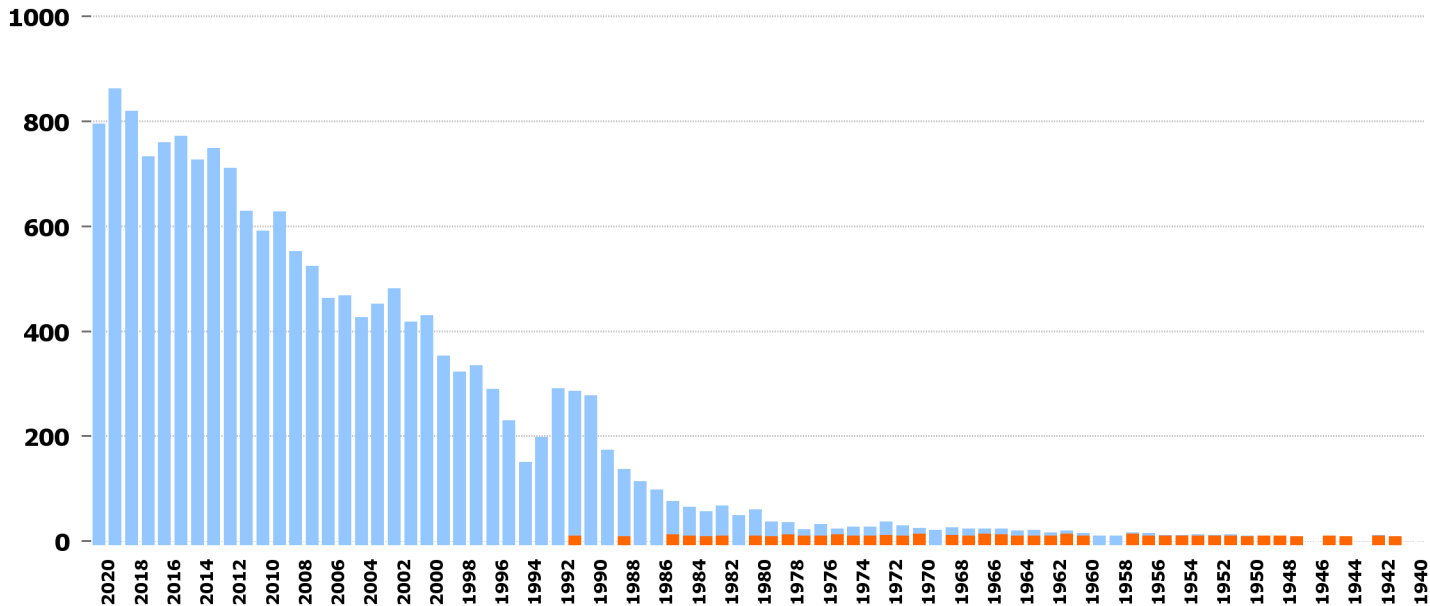
1940
1939
1938
1937
1936
1935
1934
1933
1932
1931
1930
1929
1928
1927
1926
1925
1924
1923
1922
1921
1920
1919
1918
1917
1916
1915
1914
1913
1912
1911
1910
1909
1908
1907
1906
1905
1904
1903
1902
1901
1900
1899
1898
1897
1896
1895
1894
1893
1892
1891
1890

66 Kleinmotorfahrzeug

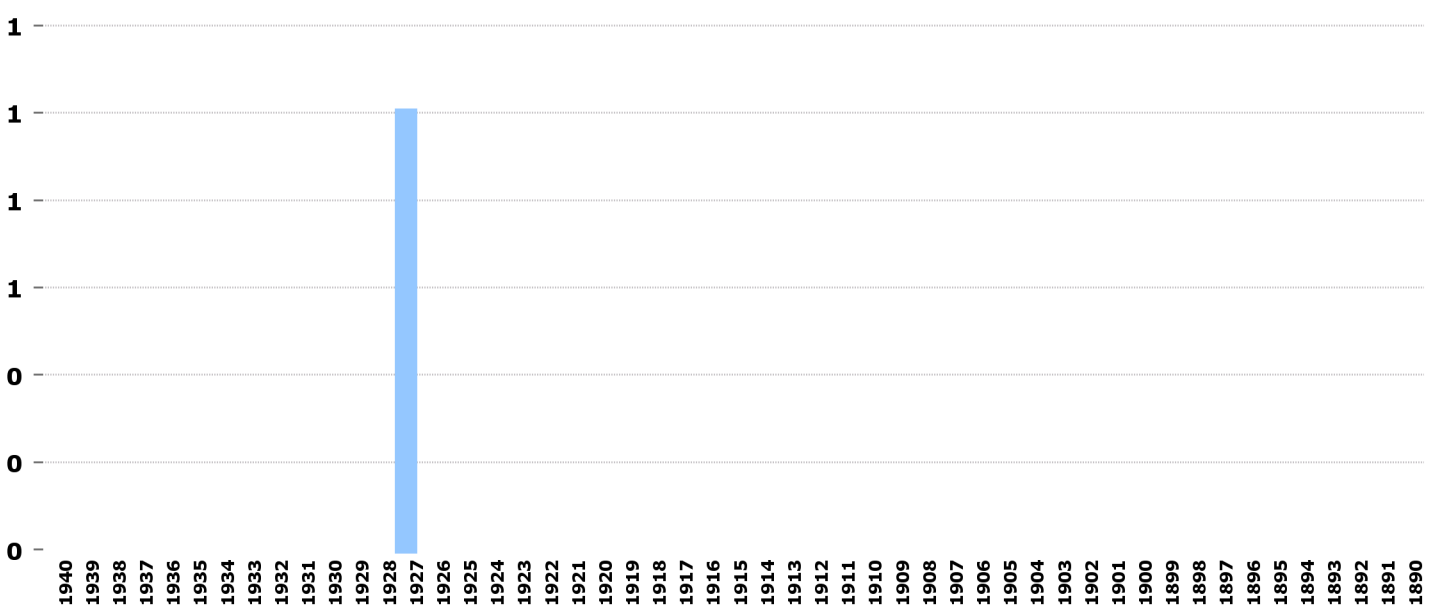
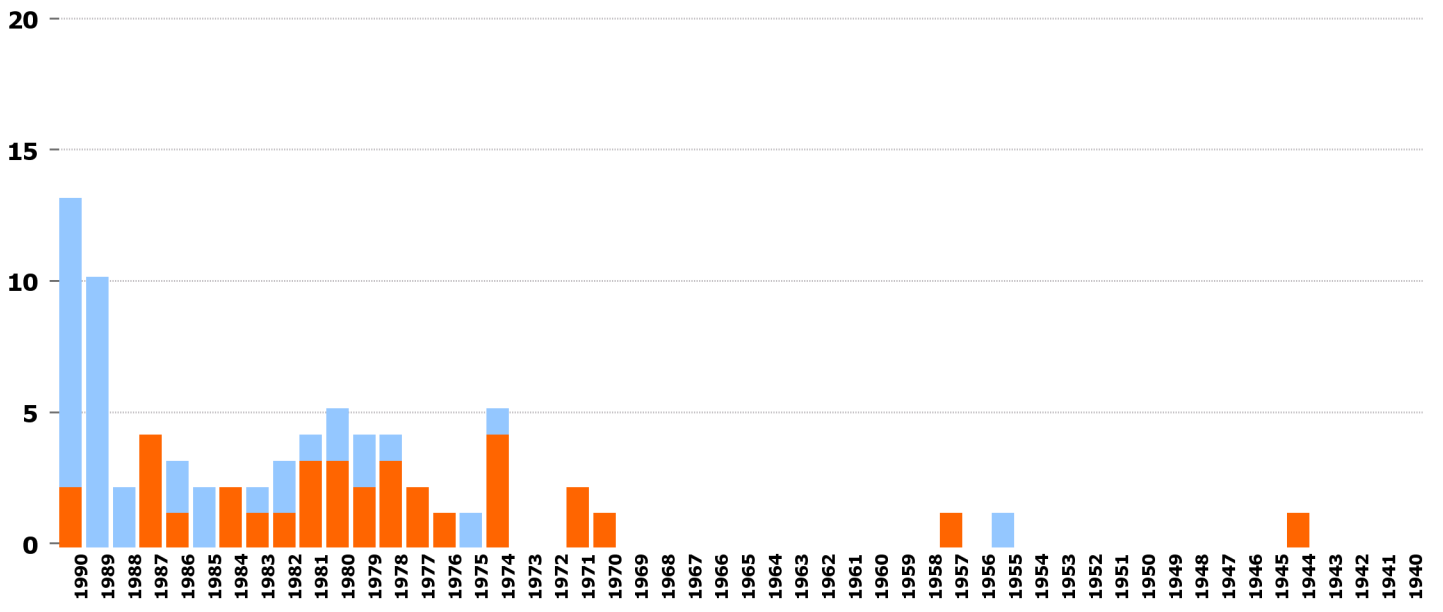
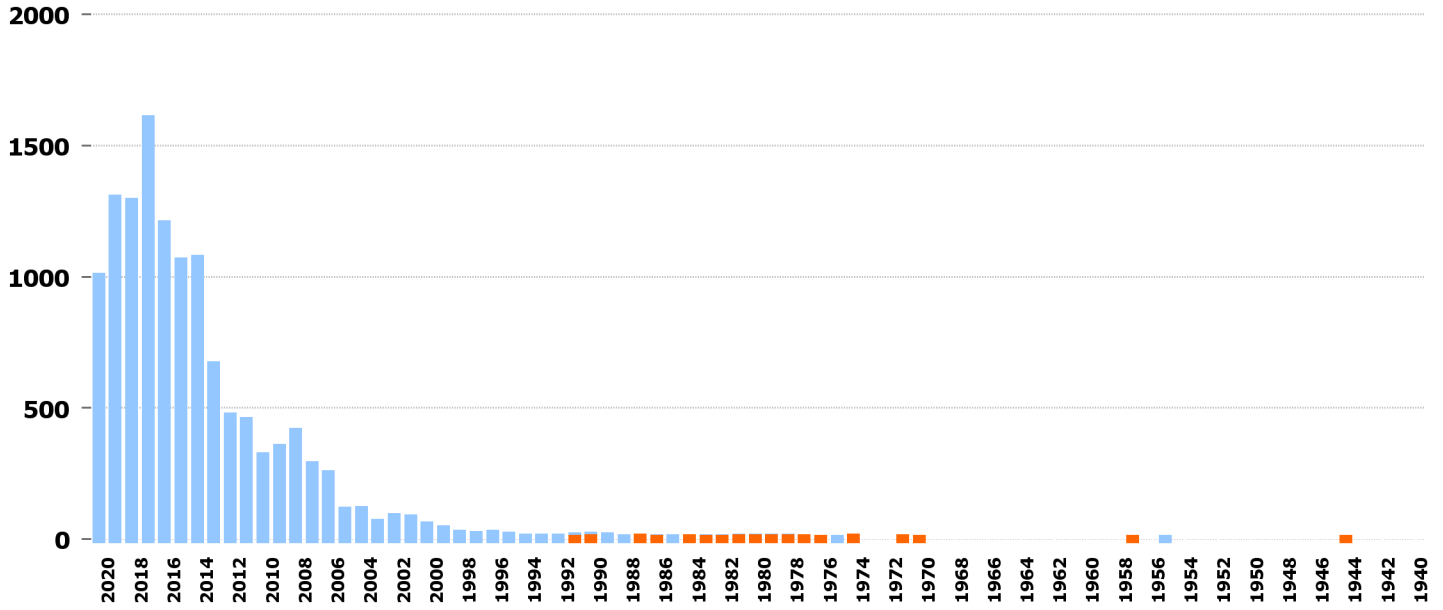


1940 1939 1938 1937 1936 1935 1934 1933 1932 1931 1930 1929 1928 1927 1926 1925 1924 1923 1922 1921 1920 1919 1918 1917 1916 1915 1914 1913 1912 1911 1910 1909 1908 1907 1906 1905 1904 1903 1902 1901 1900 1899 1898 1897 1896 1895 1894 1893 1892 1891 1890

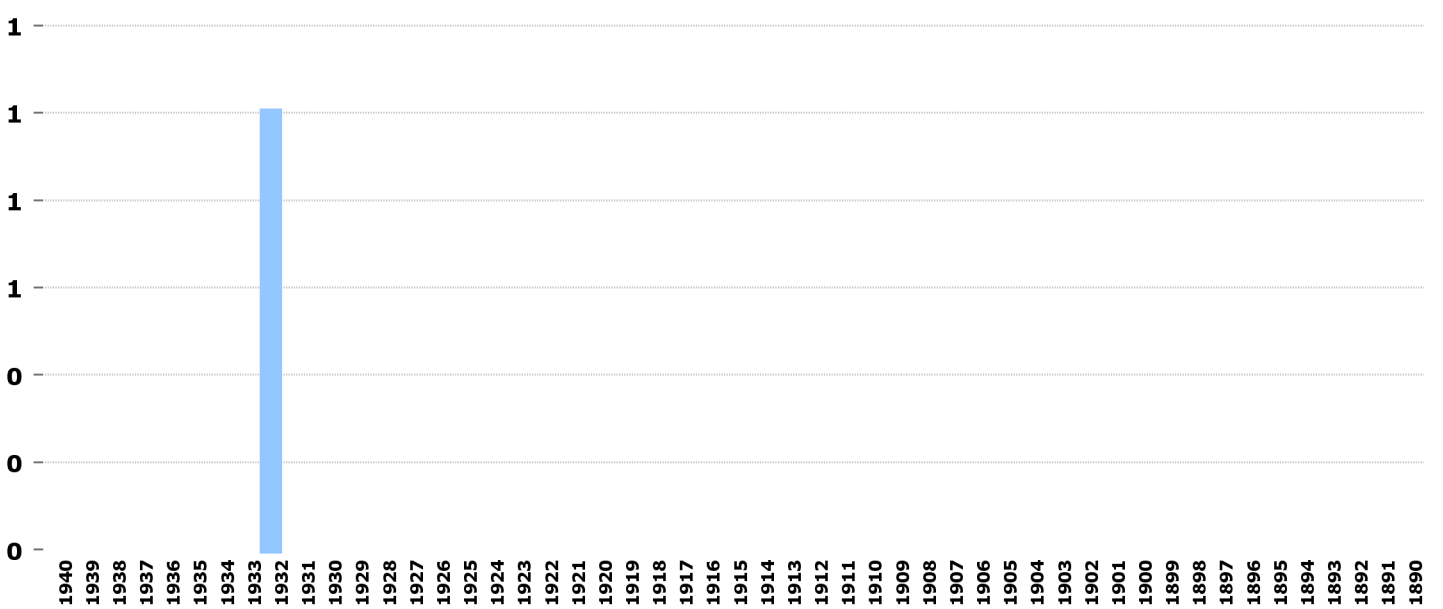
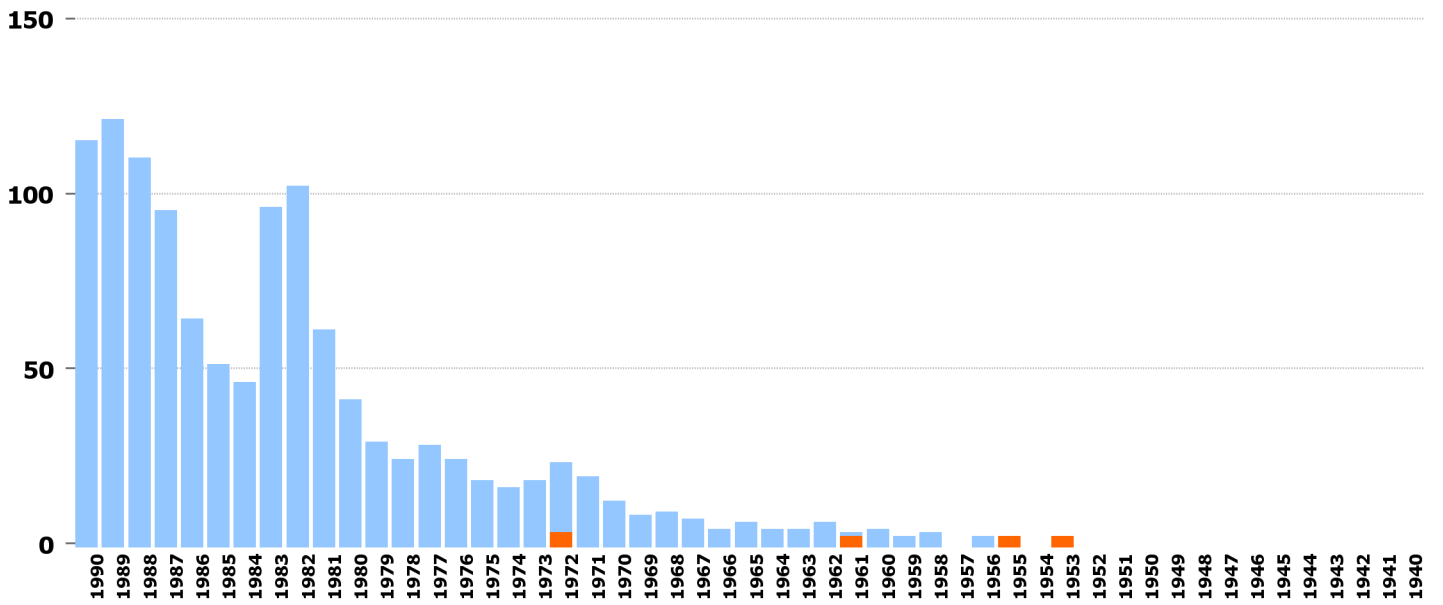
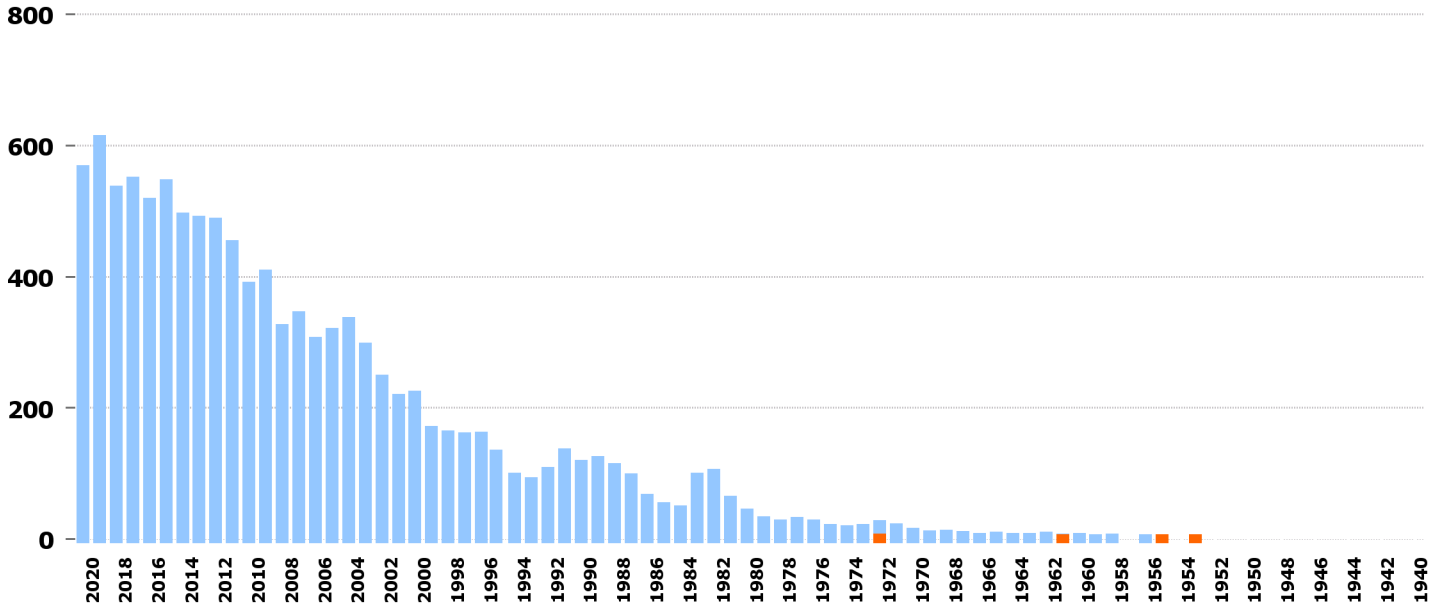
50 Arbeitsmaschine



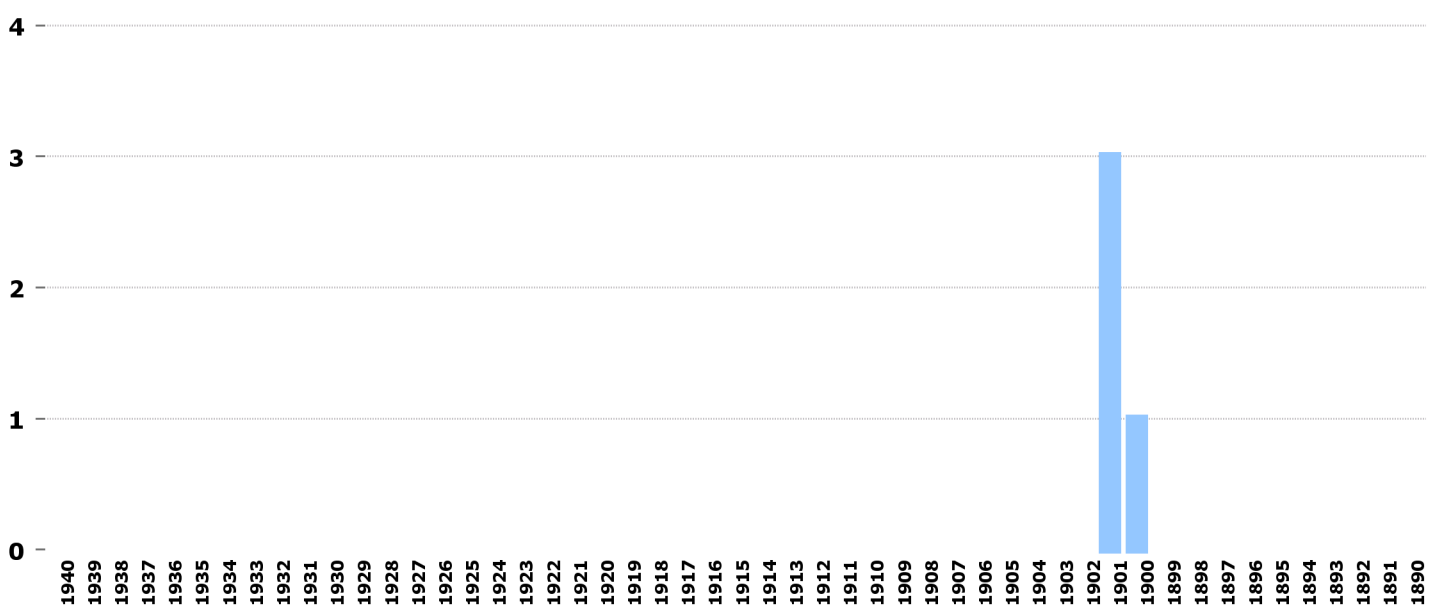
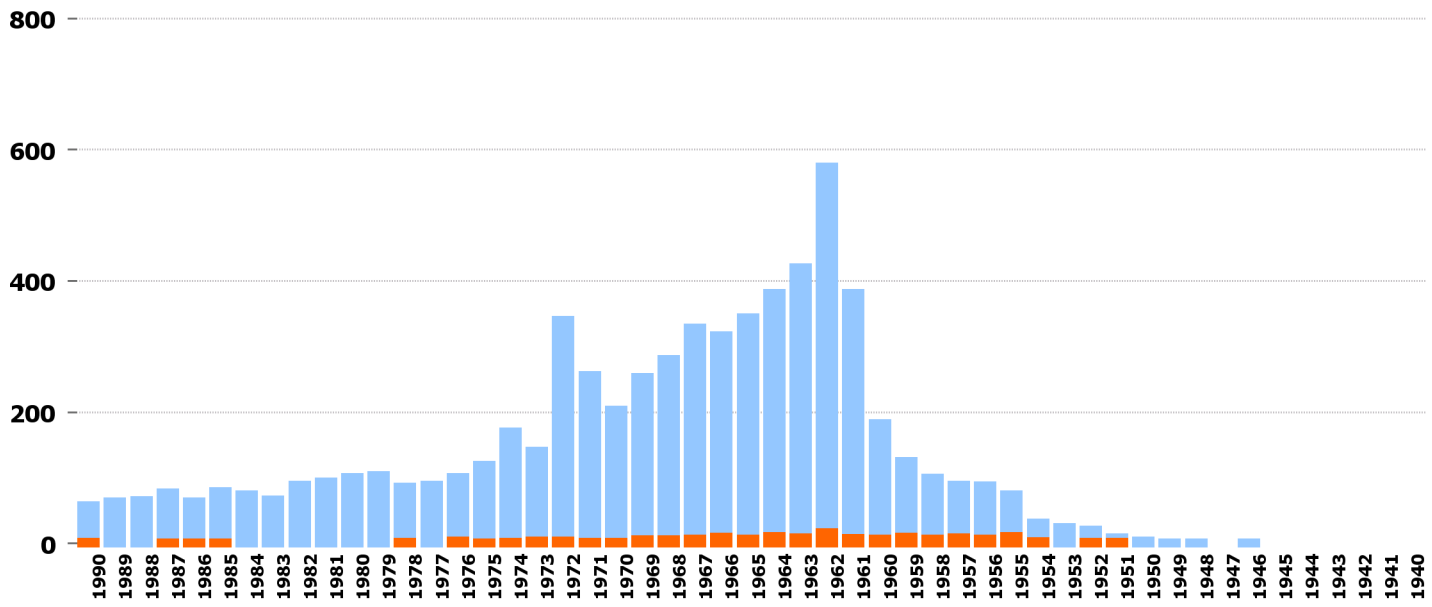
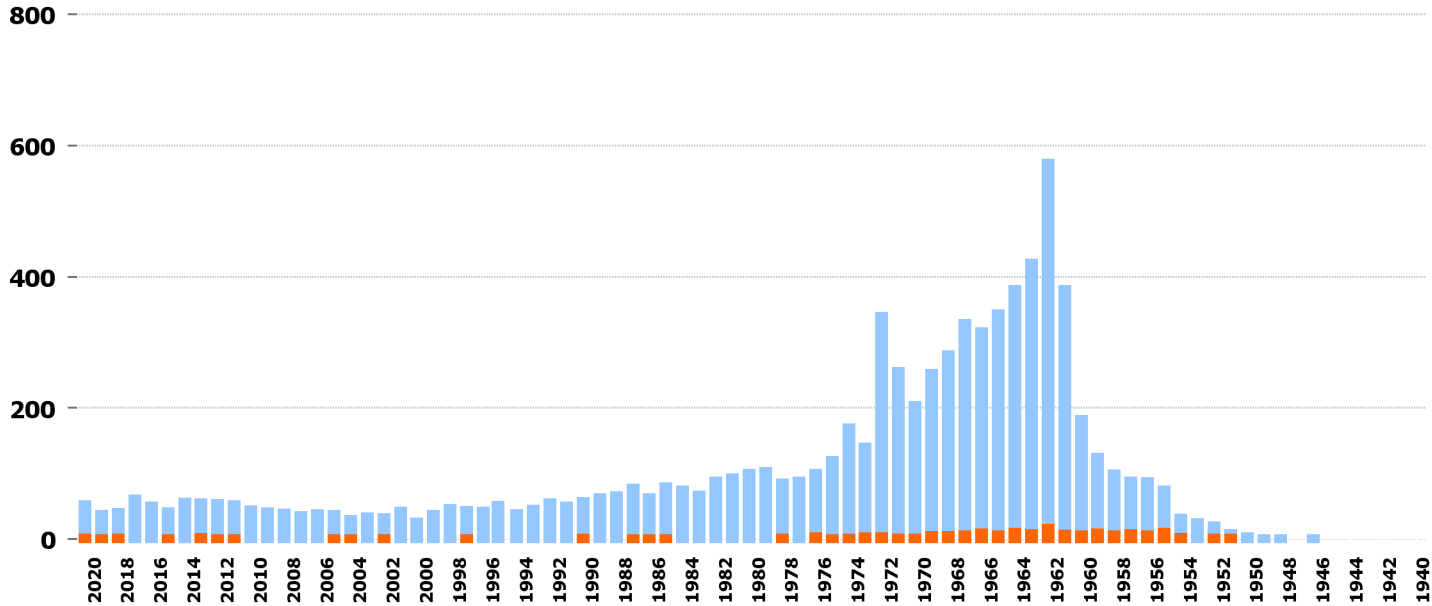
38 Sattelschlepper



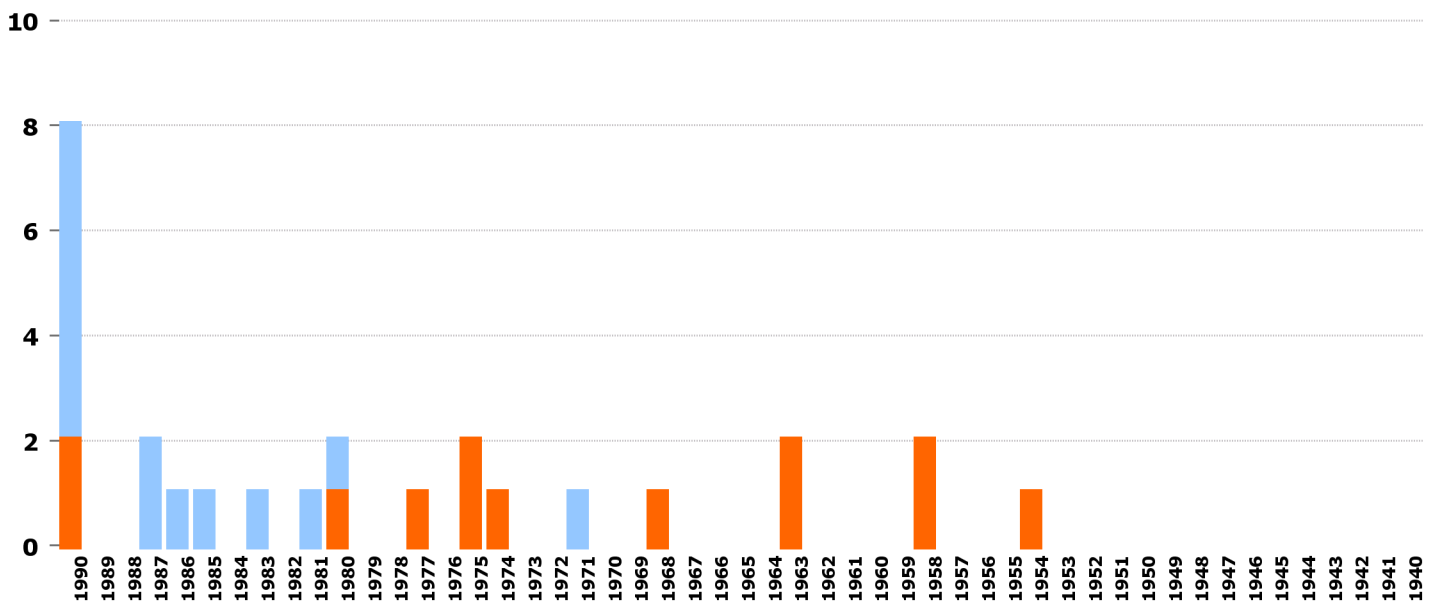
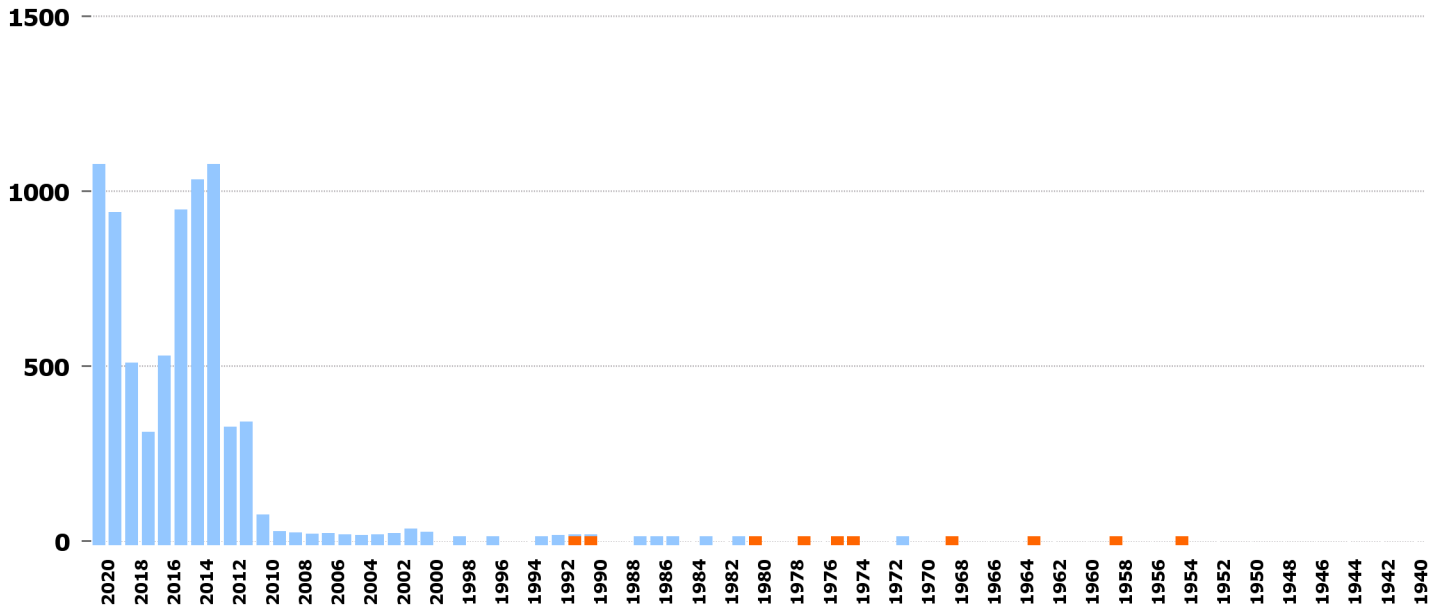
52 Landw. Arbeitskarren



83 Landw. Motoreinachser

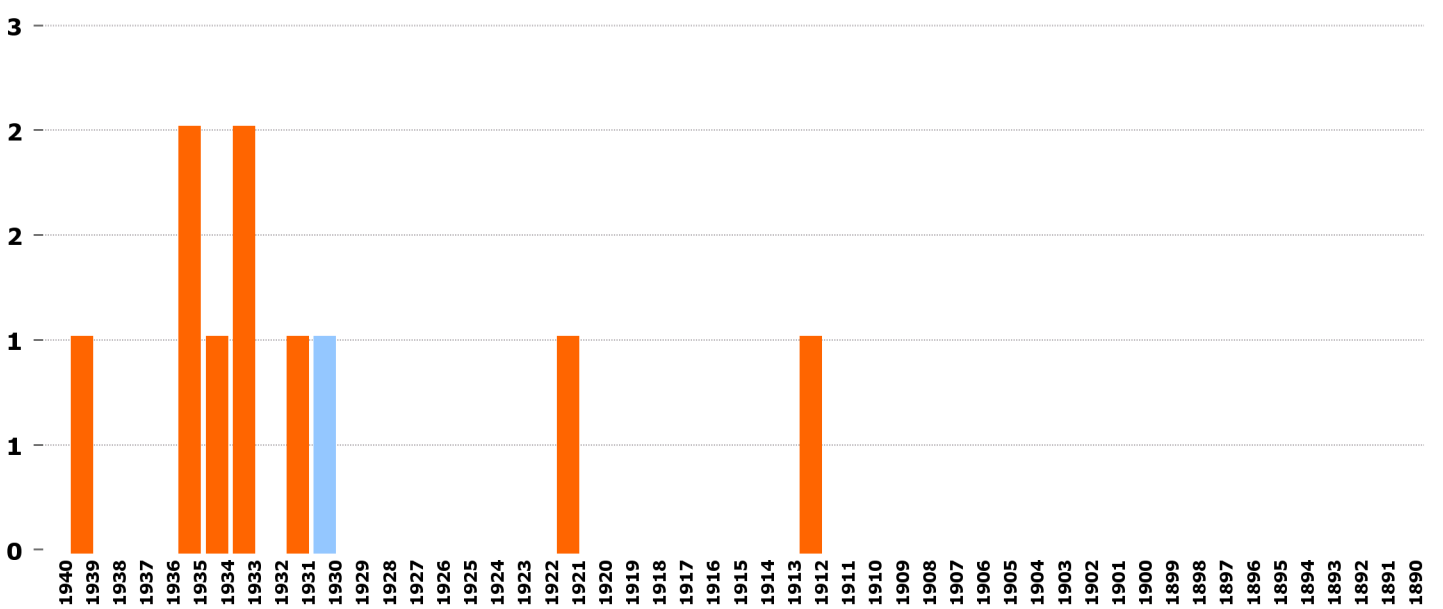
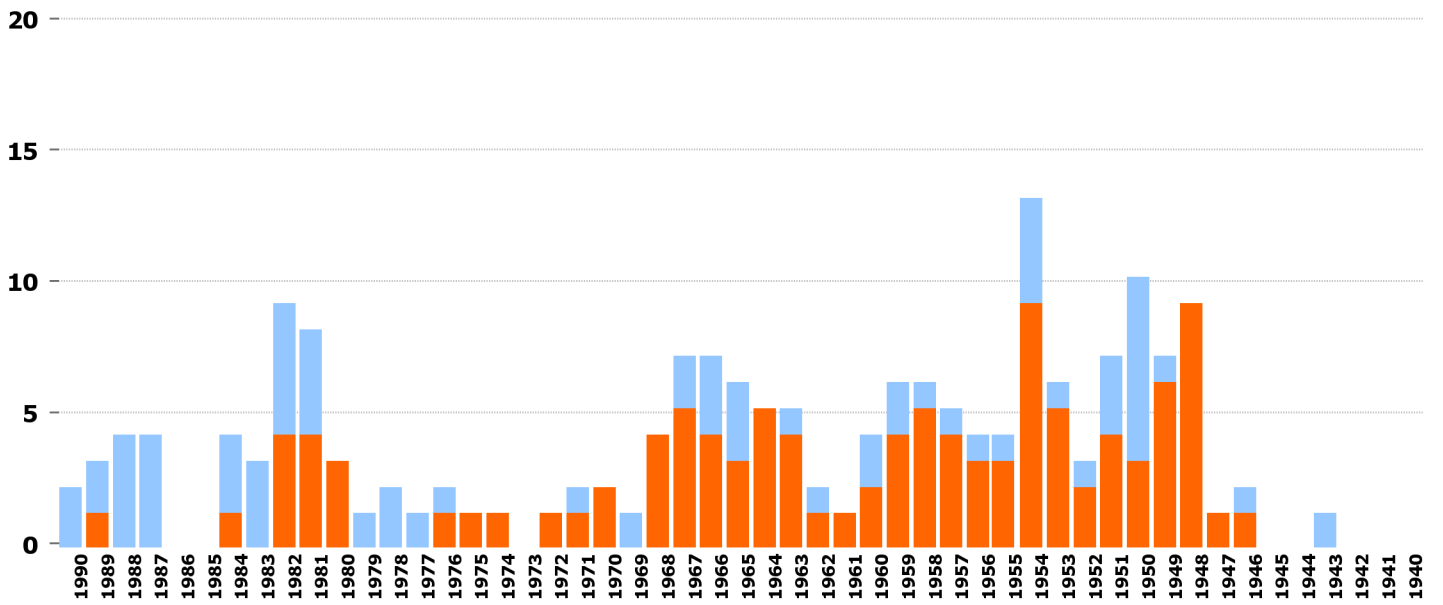
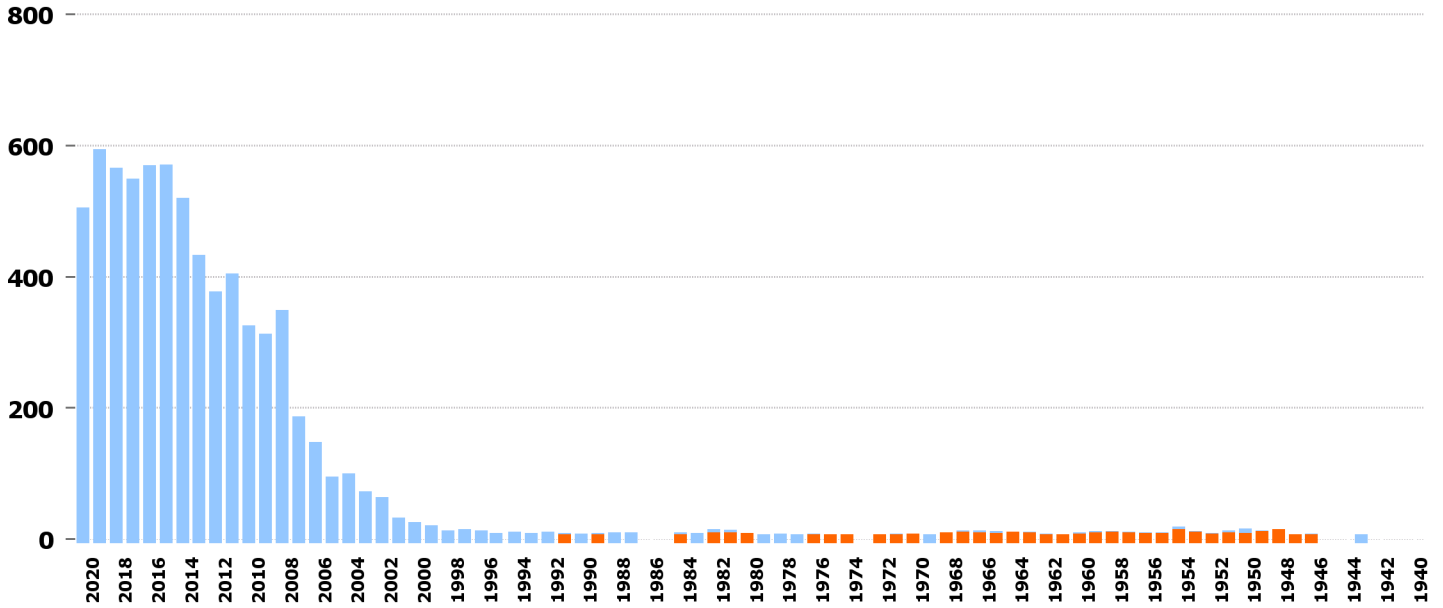


64 Kleinmotorrad-Dreirad

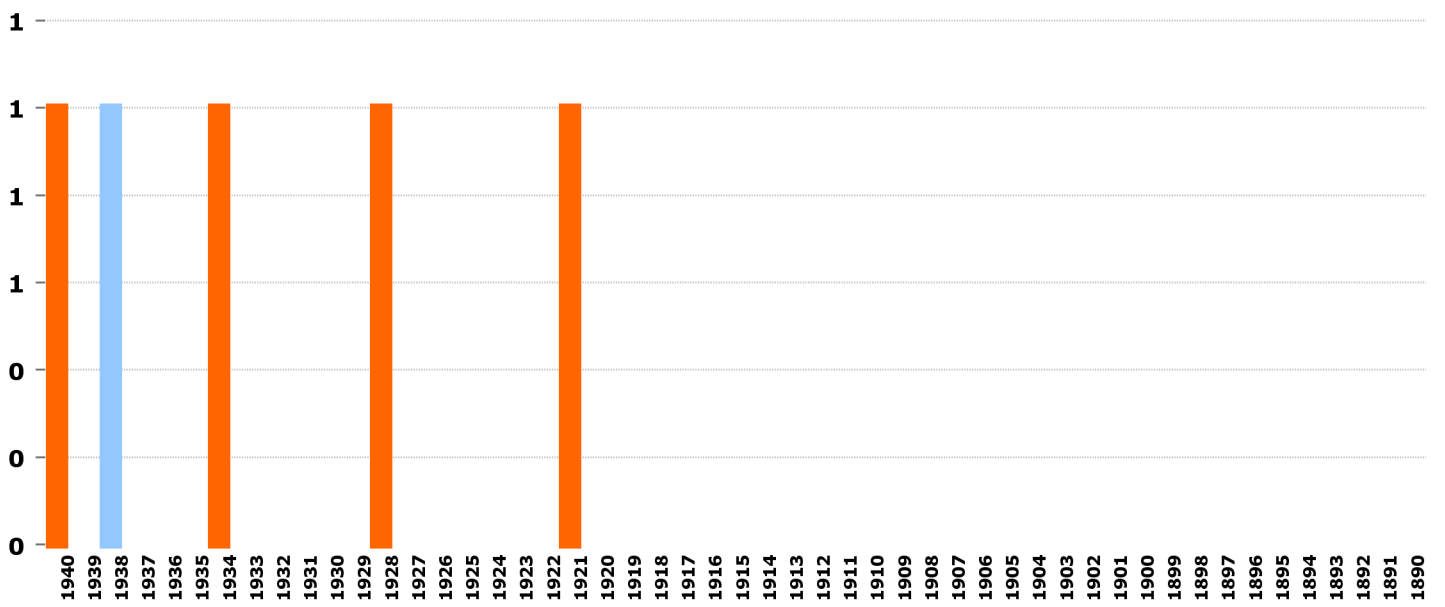
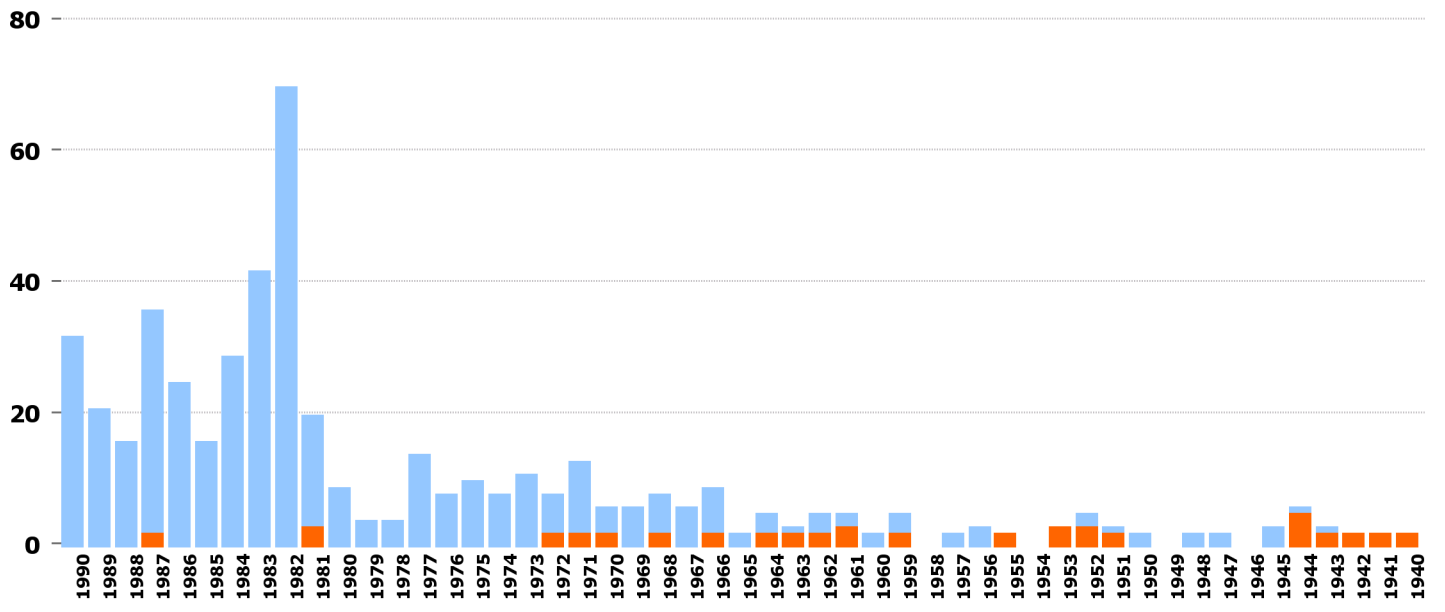
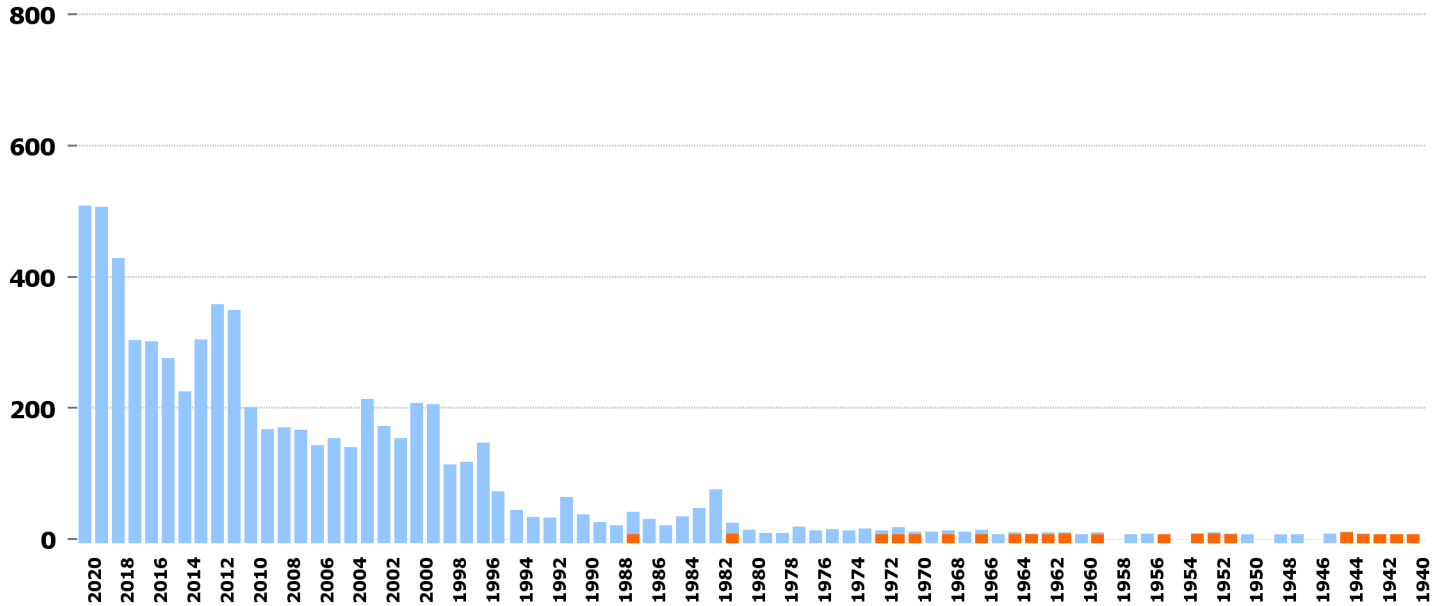


1940 1939 1938 1937 1936 1935 1934 1933 1932 1931 1930 1929 1928 1927 1926 1925 1924 1923 1922 1921 1920 1919 1918 1917 1916 1915 1914 1913 1912 1911 1910 1909 1908 1907 1906 1905 1904 1903 1902 1901 1900 1899 1898 1897 1896 1895 1894 1893 1892 1891 1890

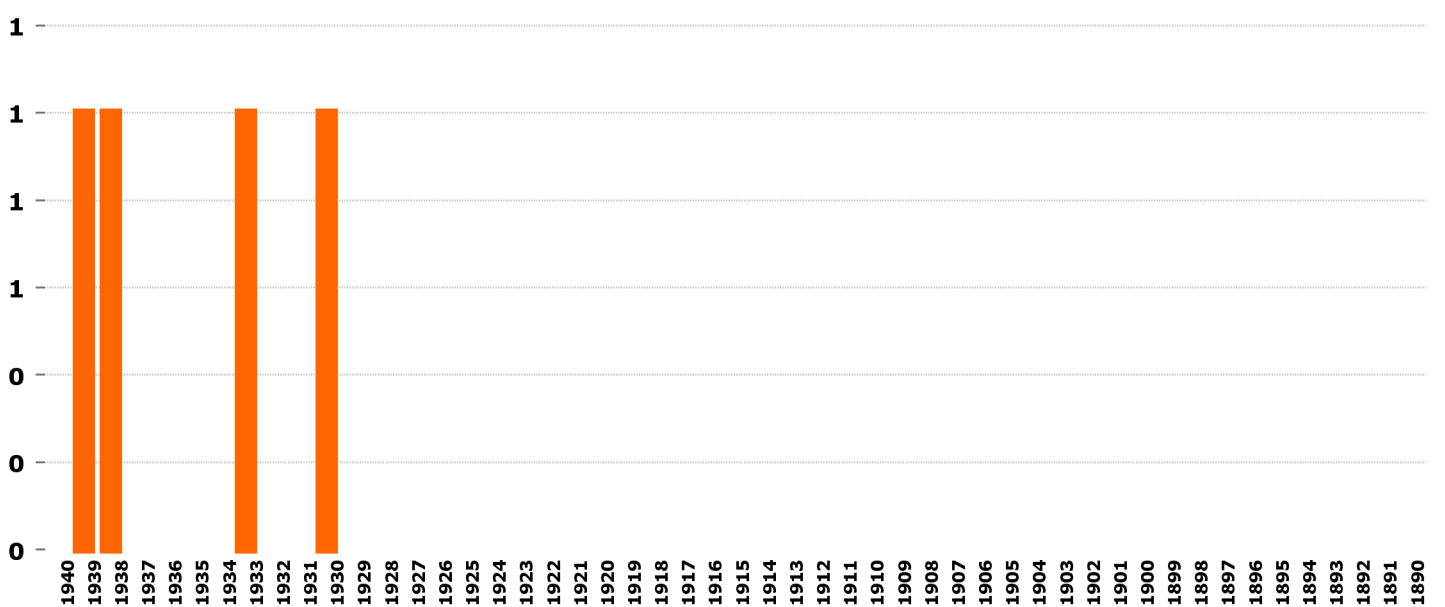
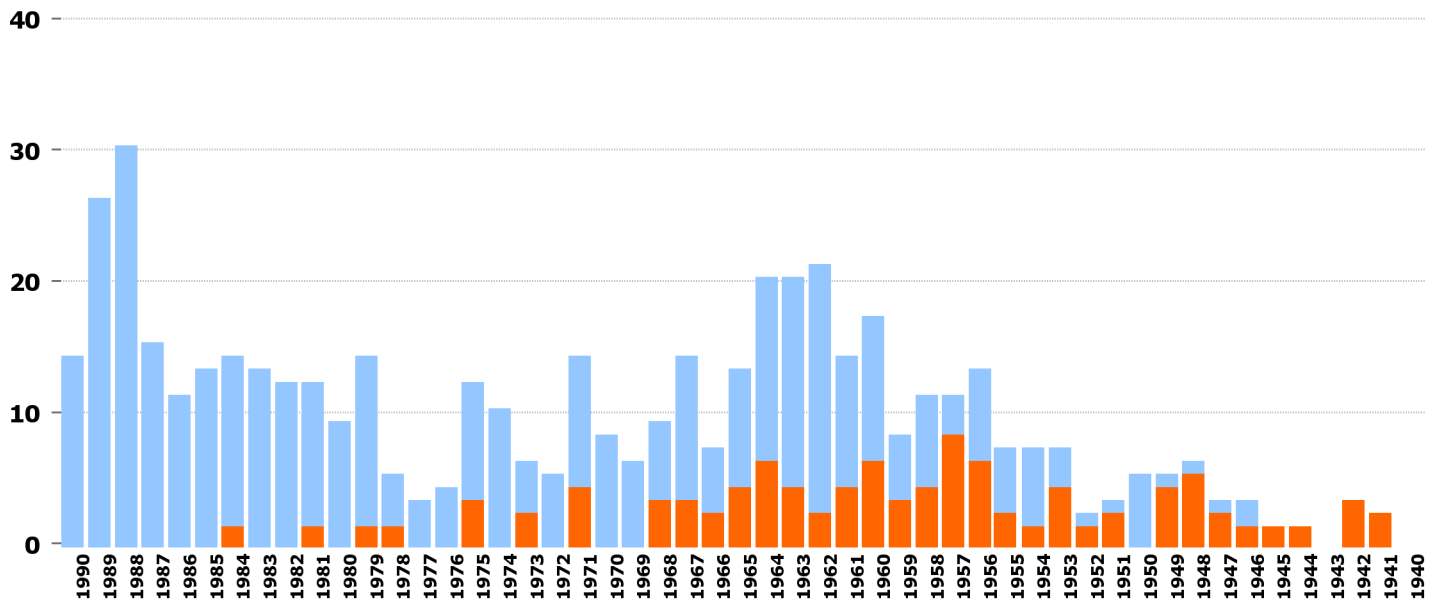
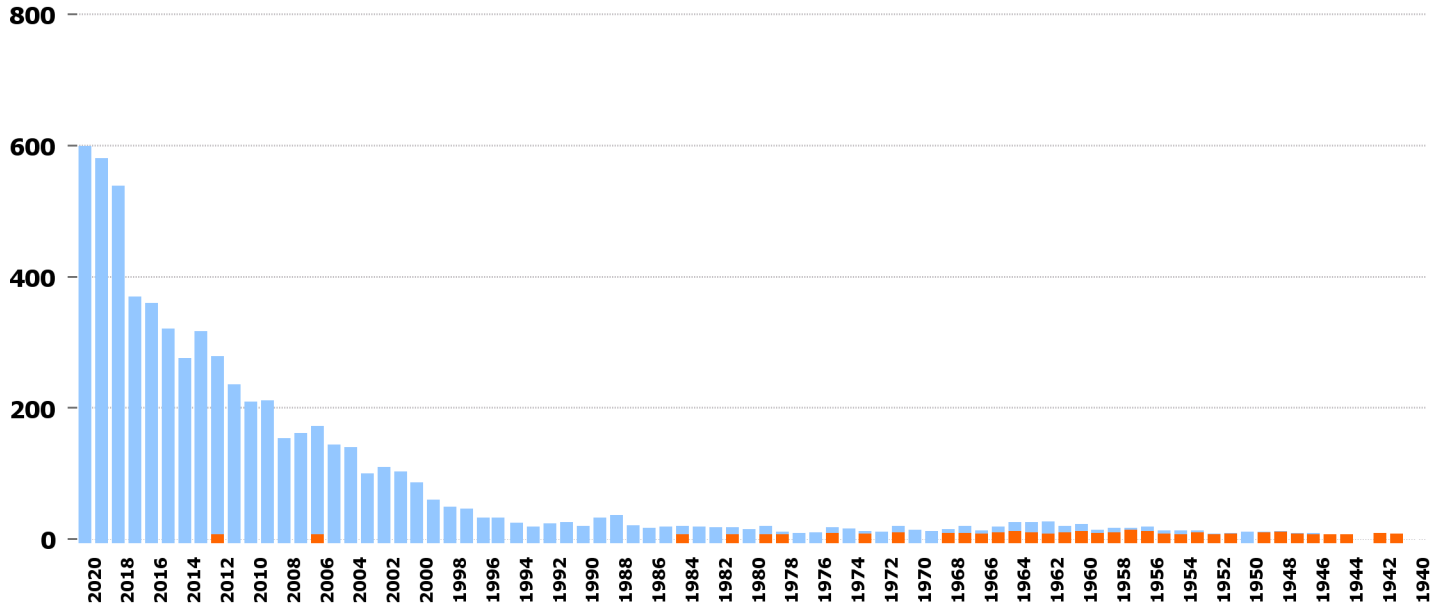
20 Gesellschaftswagen



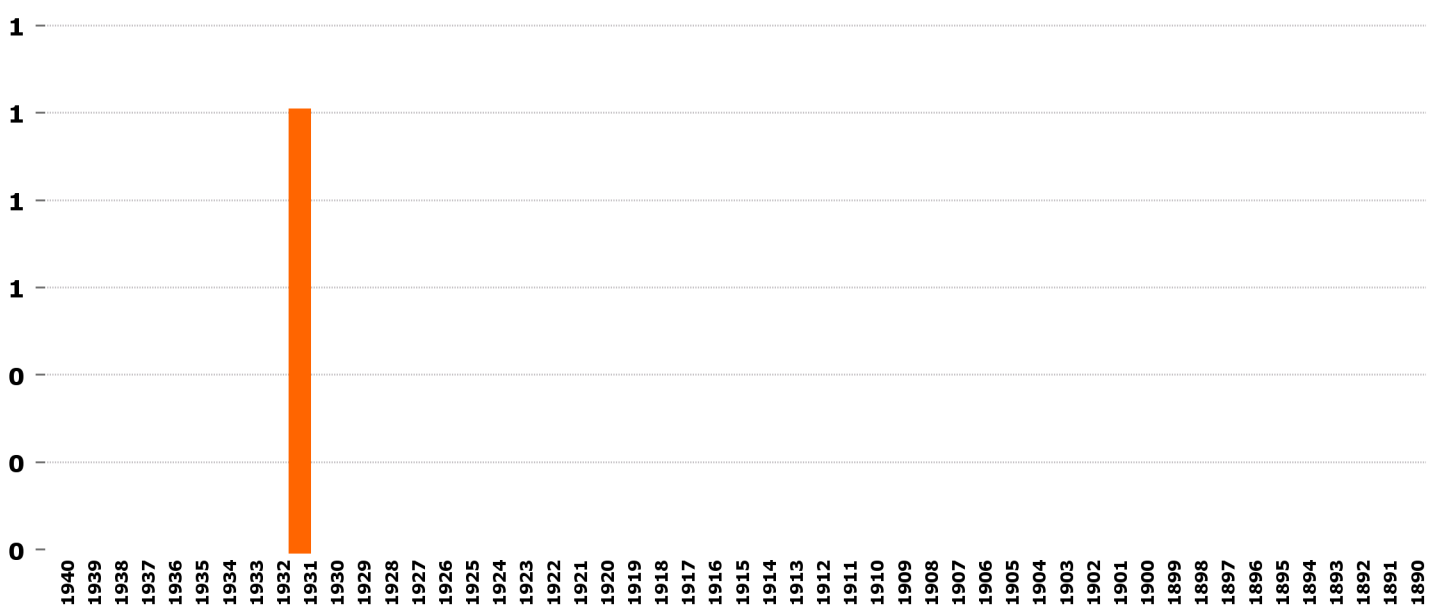
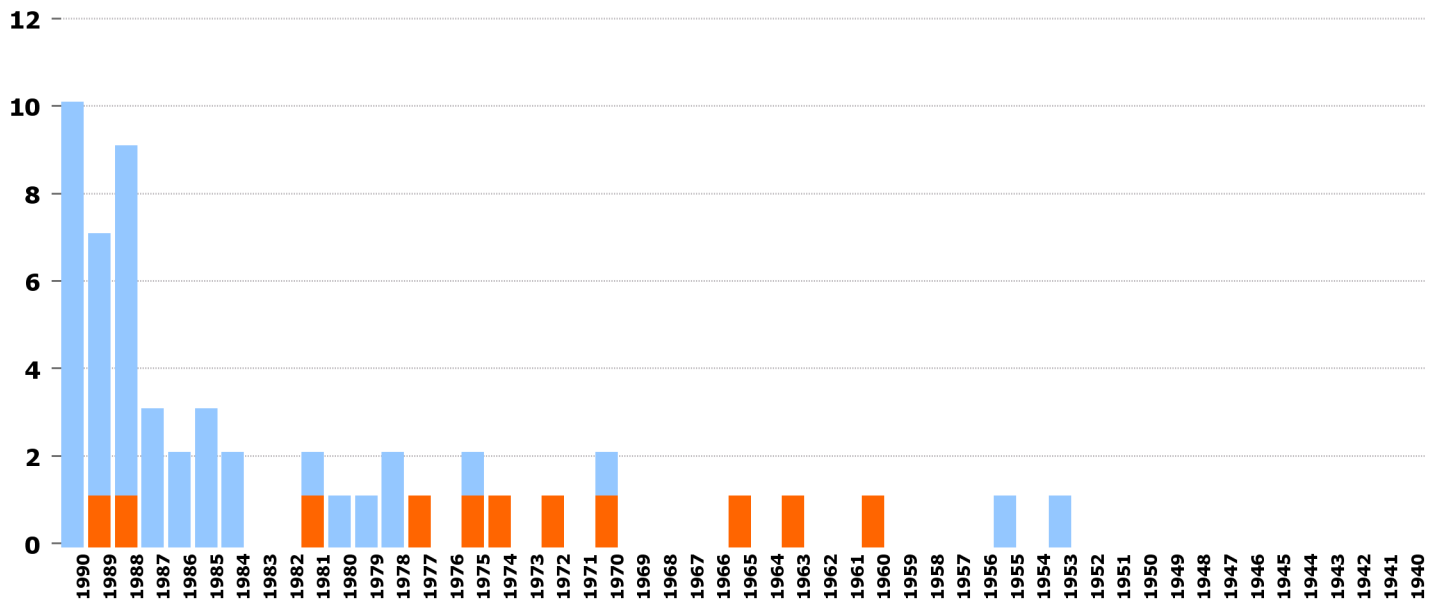
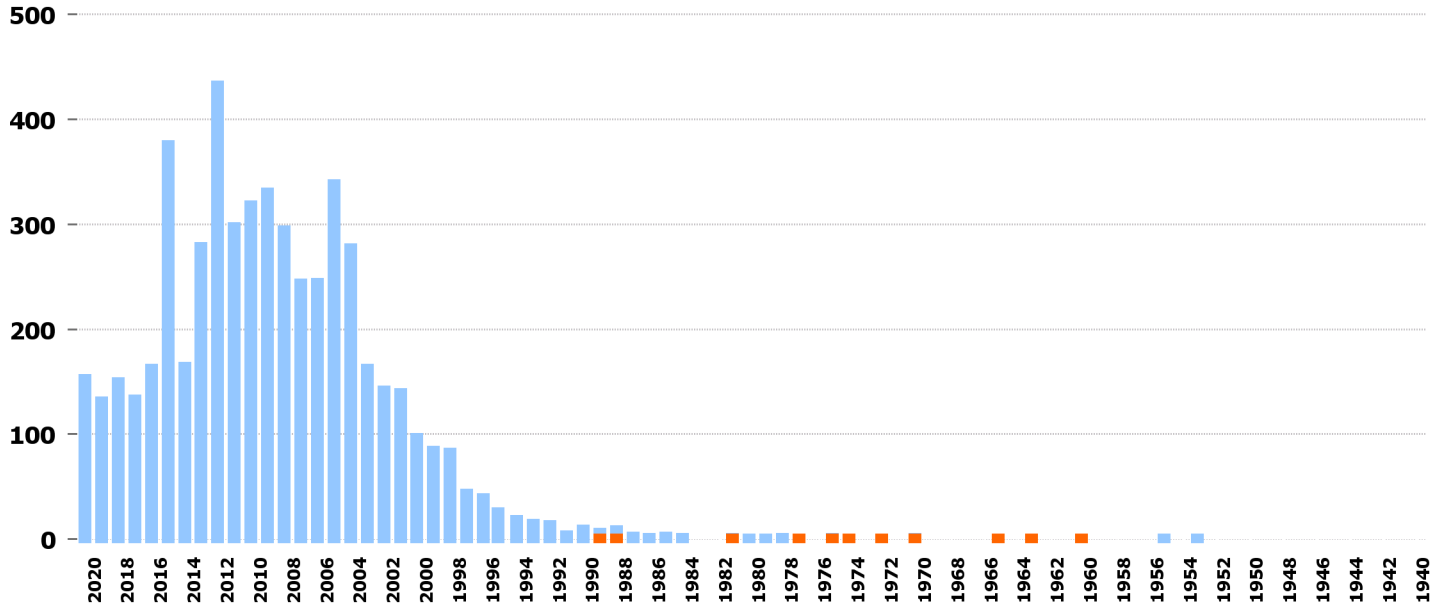
11 Schwerer Motorwagen



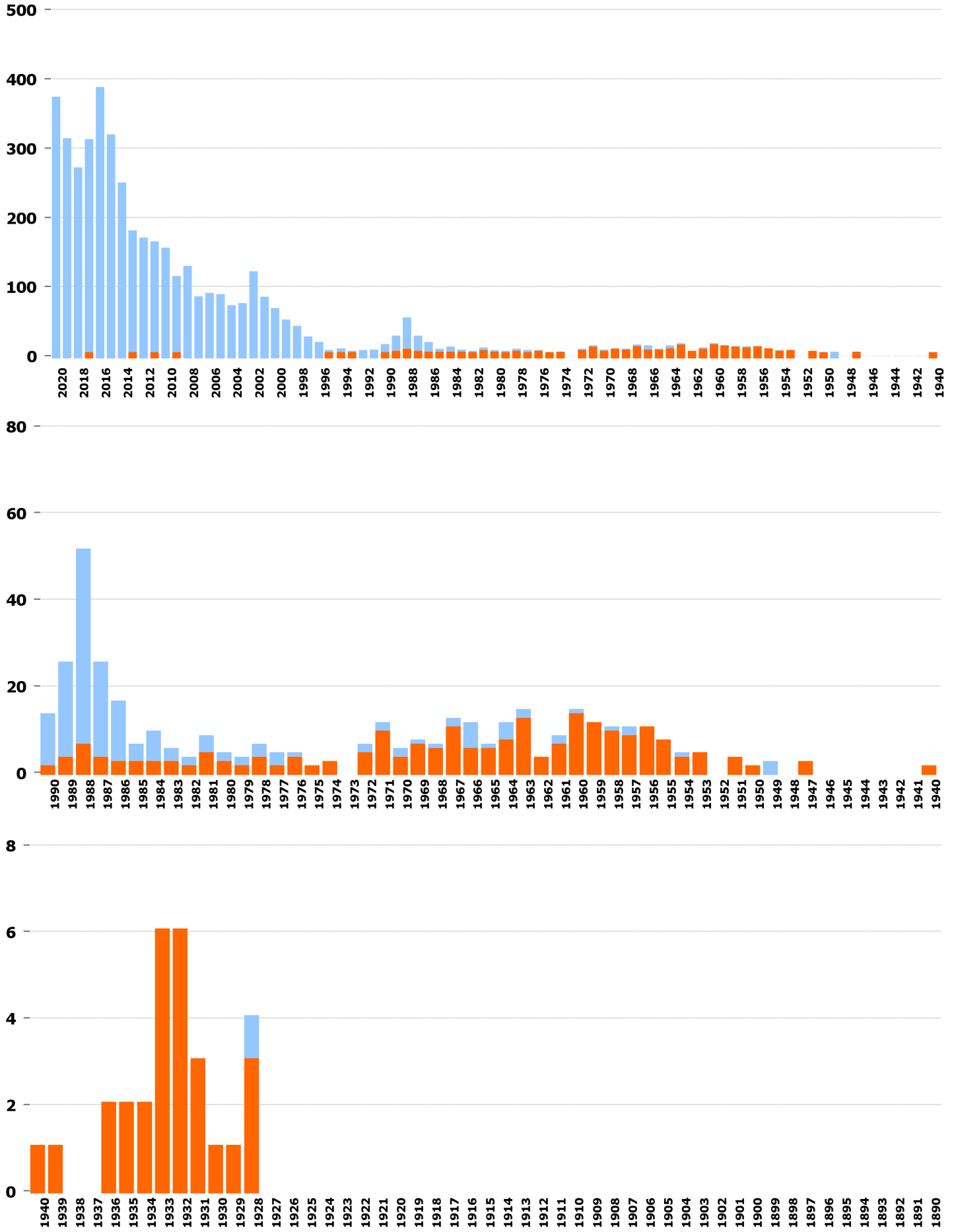
42 Traktor



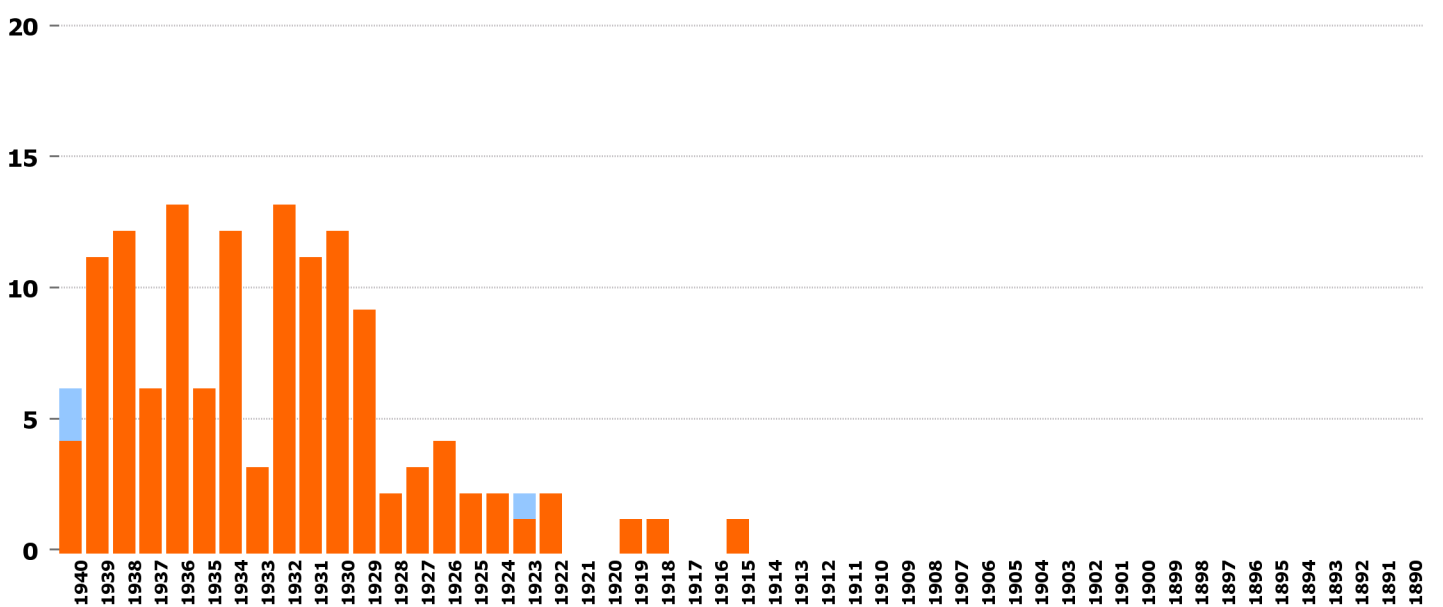
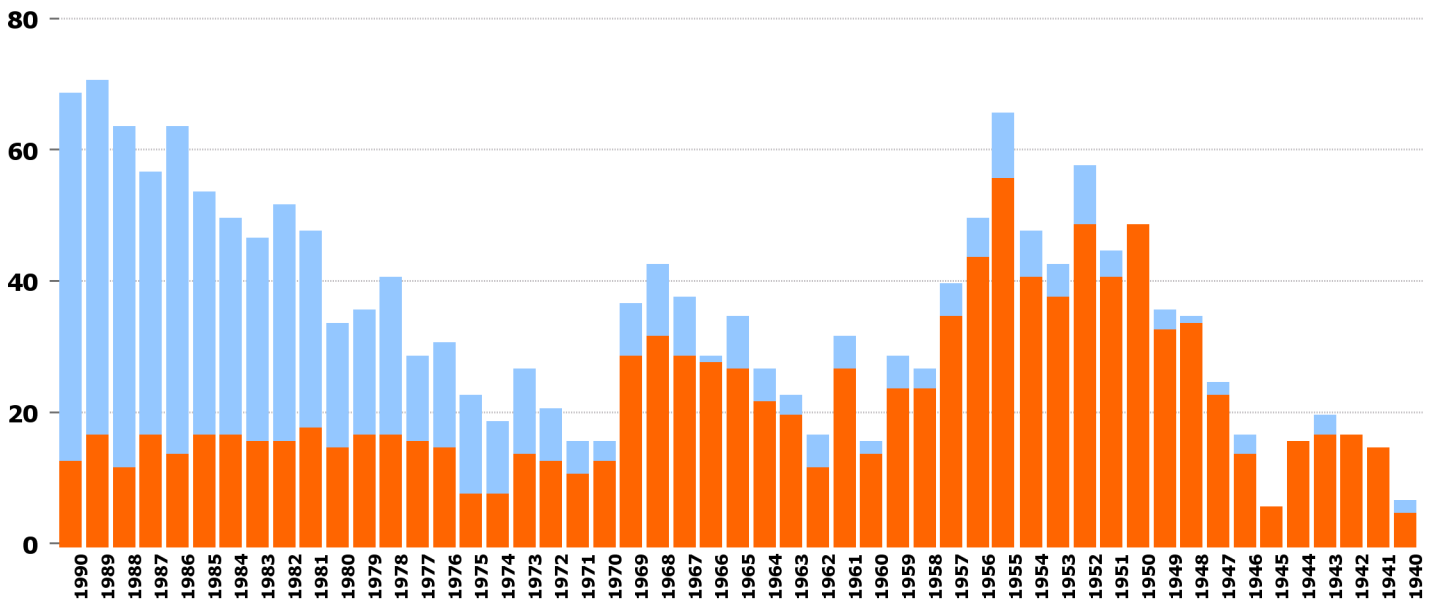
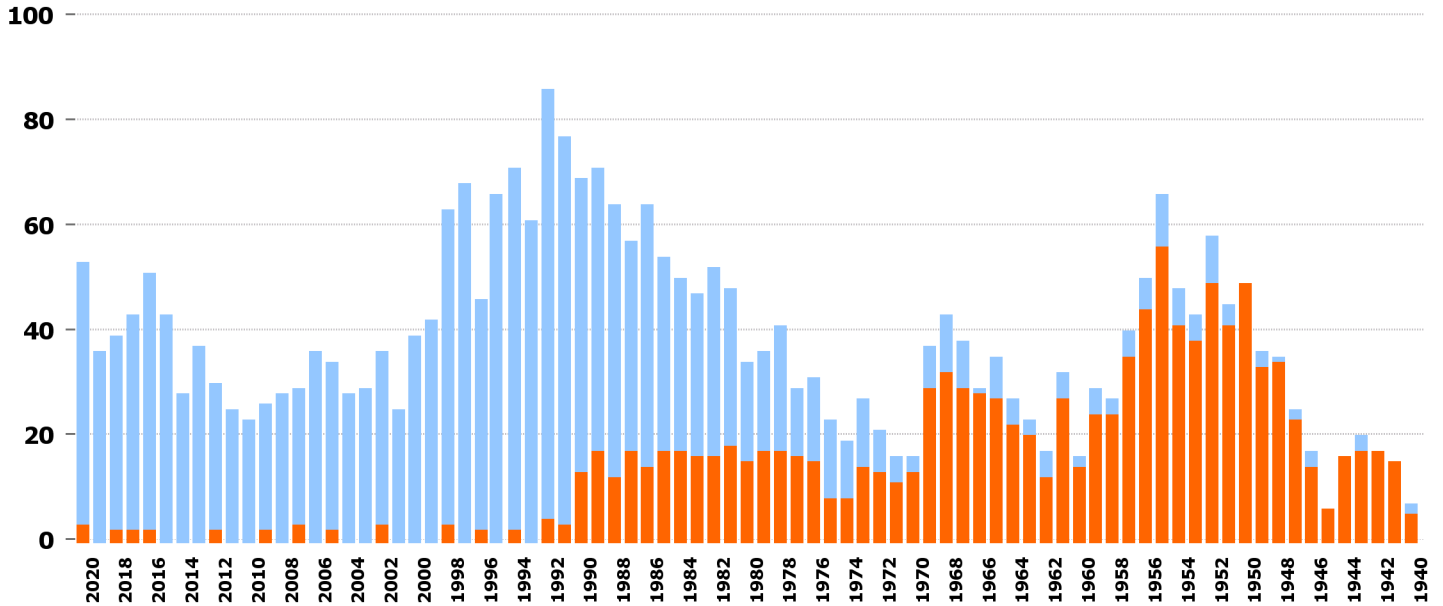
21 Kleinbus



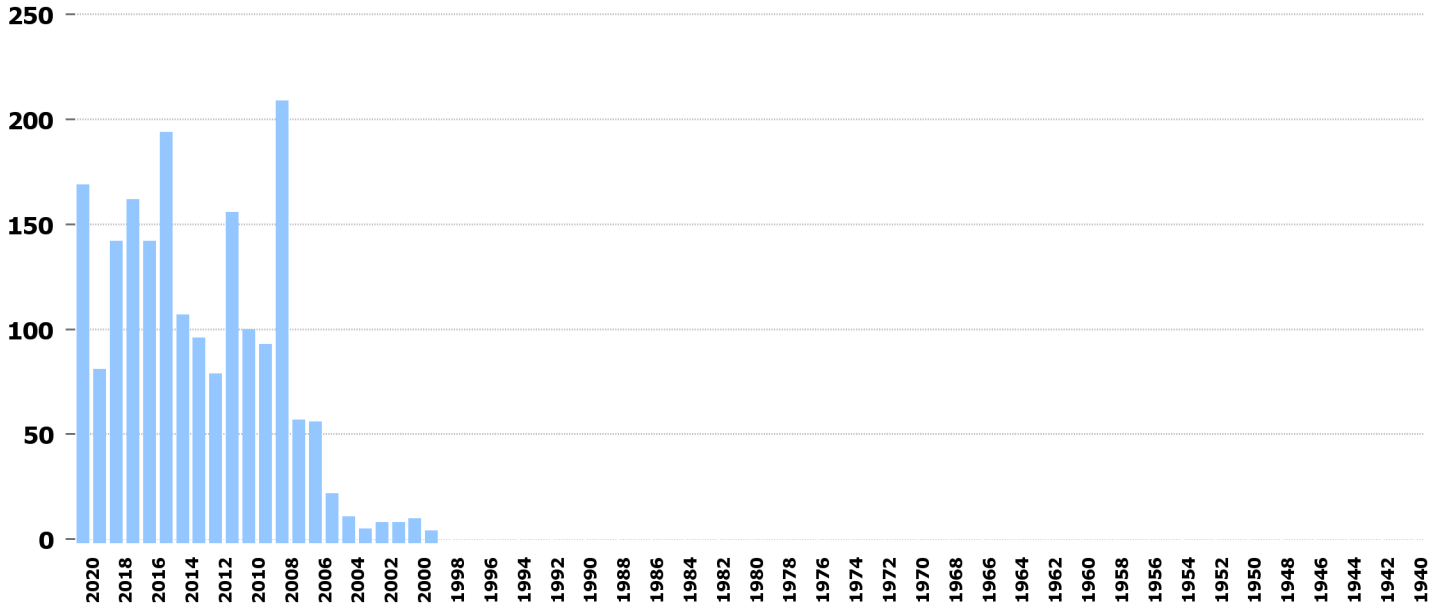
67 Dreirädr. Motorfahrzeug



63 Motorrad-Seitenwagen



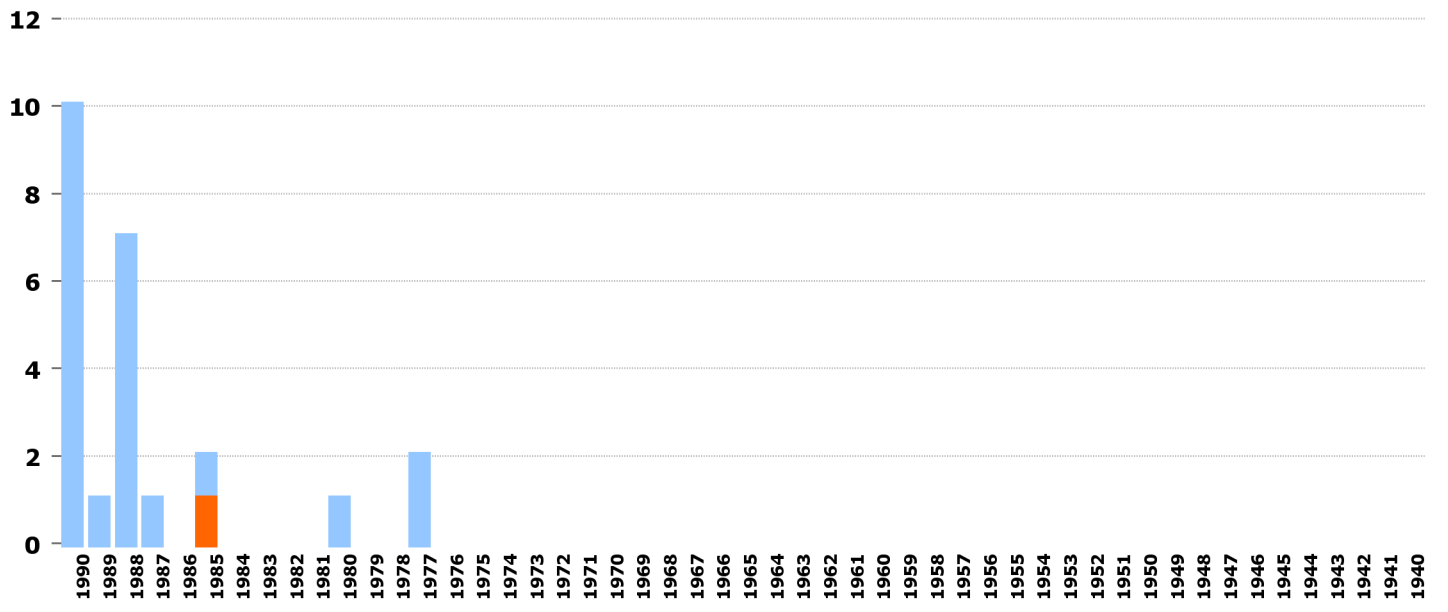
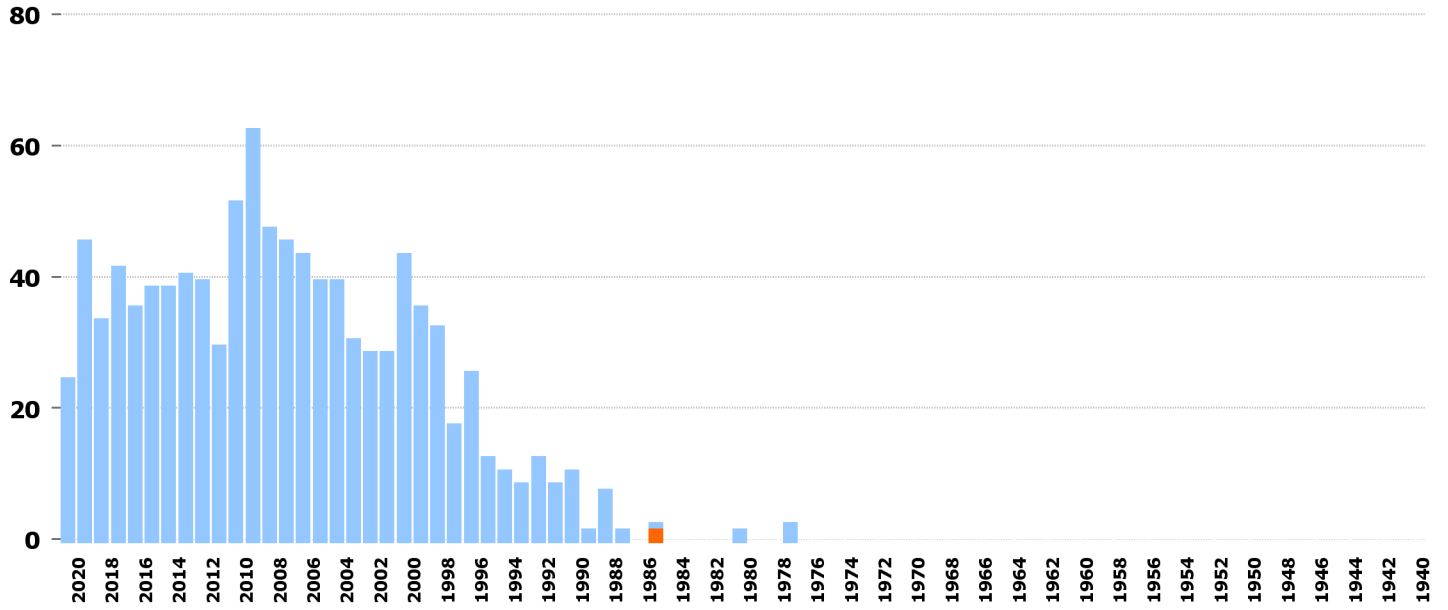
22 Gelenkbus



1990
1989
1988
1987
1986
1985
1984
1983
1982
1981
1980
1979
1978
1977
1976
1975
1974
1973
1972
1971
1970
1969
1968
1967
1966
1965
1964
1963
1962
1961
1960
1959
1958
1957
1956
1955
1954
1953
1952
1951
1950
1949
1948
1947
1946
1945
1944
1943
1942
1941
1940

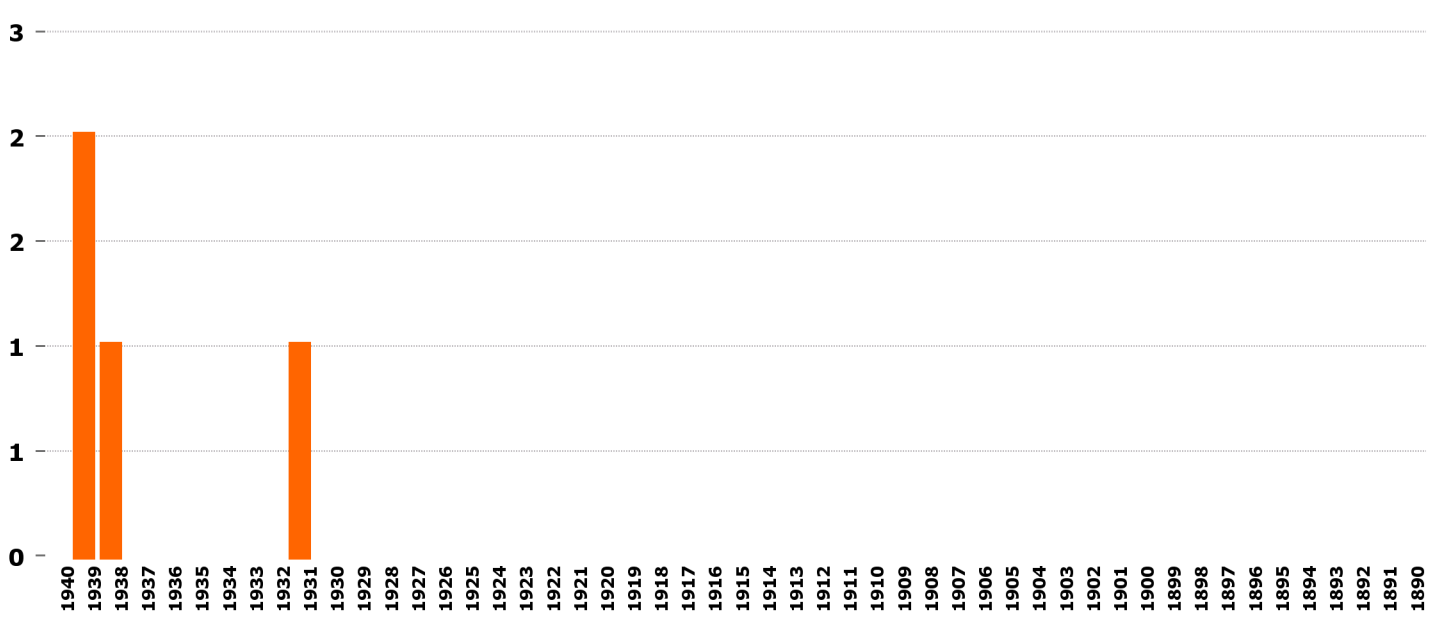
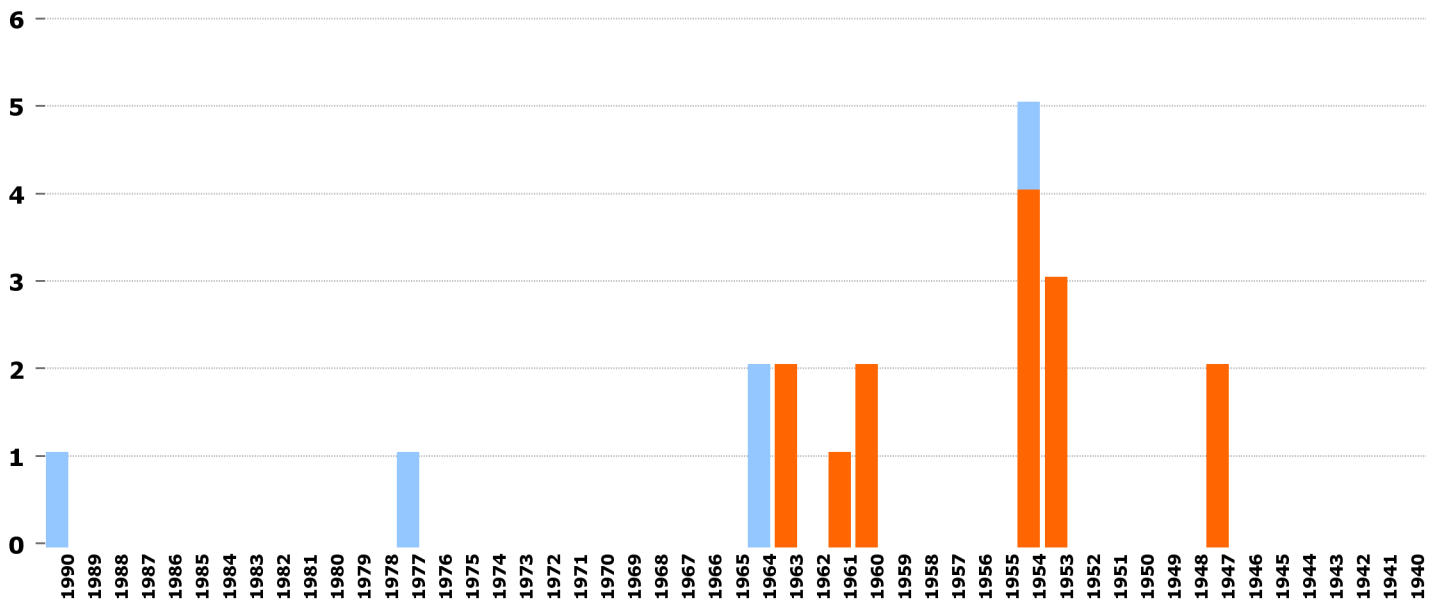
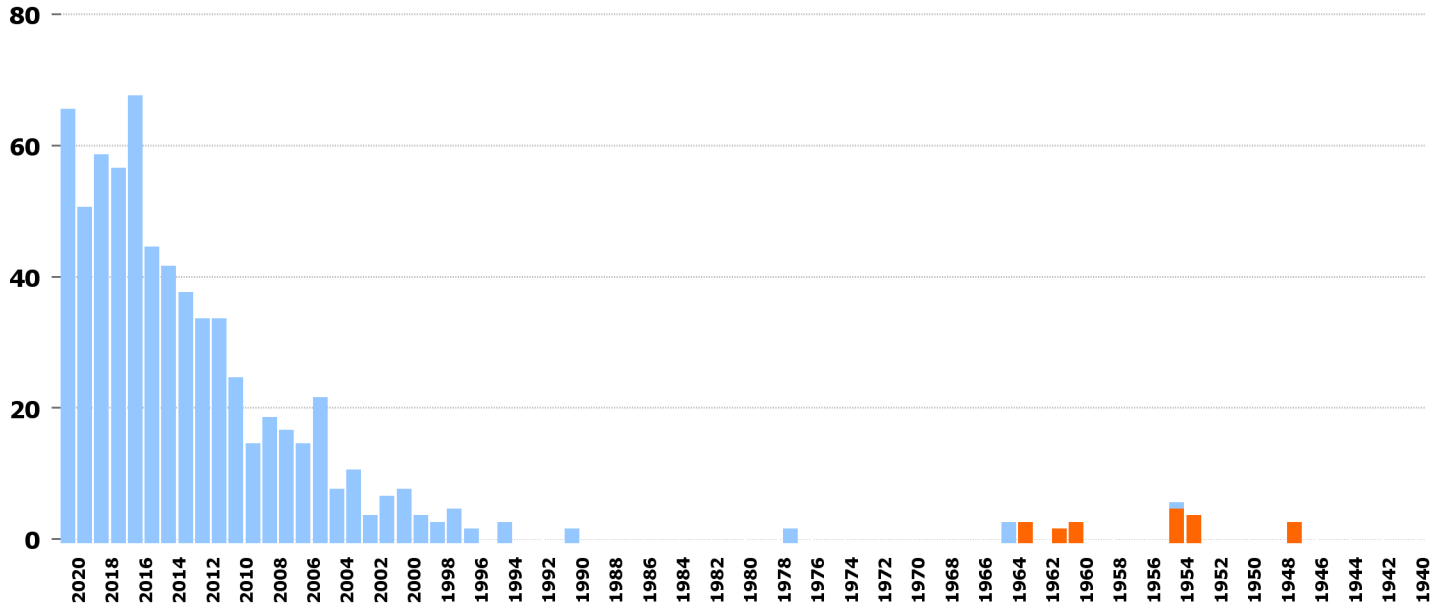
1940
1939
1938
1937
1936
1935
1934
1933
1932
1931
1930
1929
1928
1927
1926
1925
1924
1923
1922
1921
1920
1919
1918
1917
1916
1915
1914
1913
1912
1911
1910
1909
1908
1907
1906
1905
1904
1903
1902
1901
1900
1899
1898
1897
1896
1895
1894
1893
1892
1891
1890

68 Motorschlitten

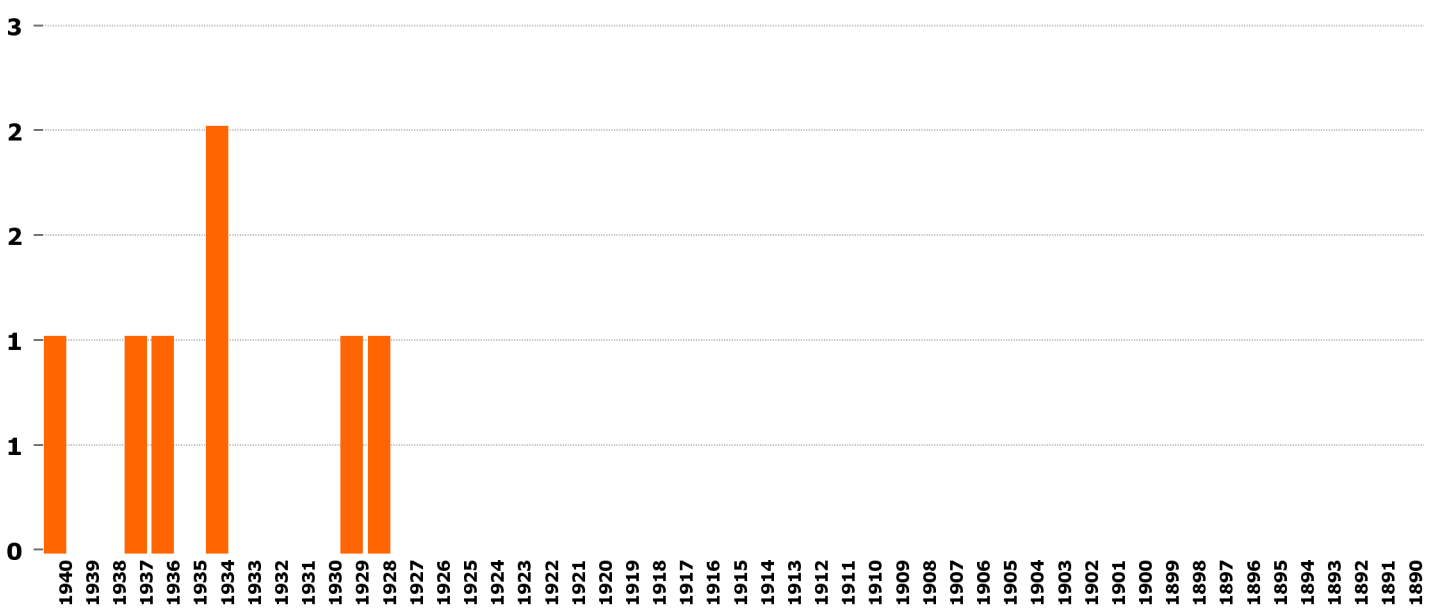
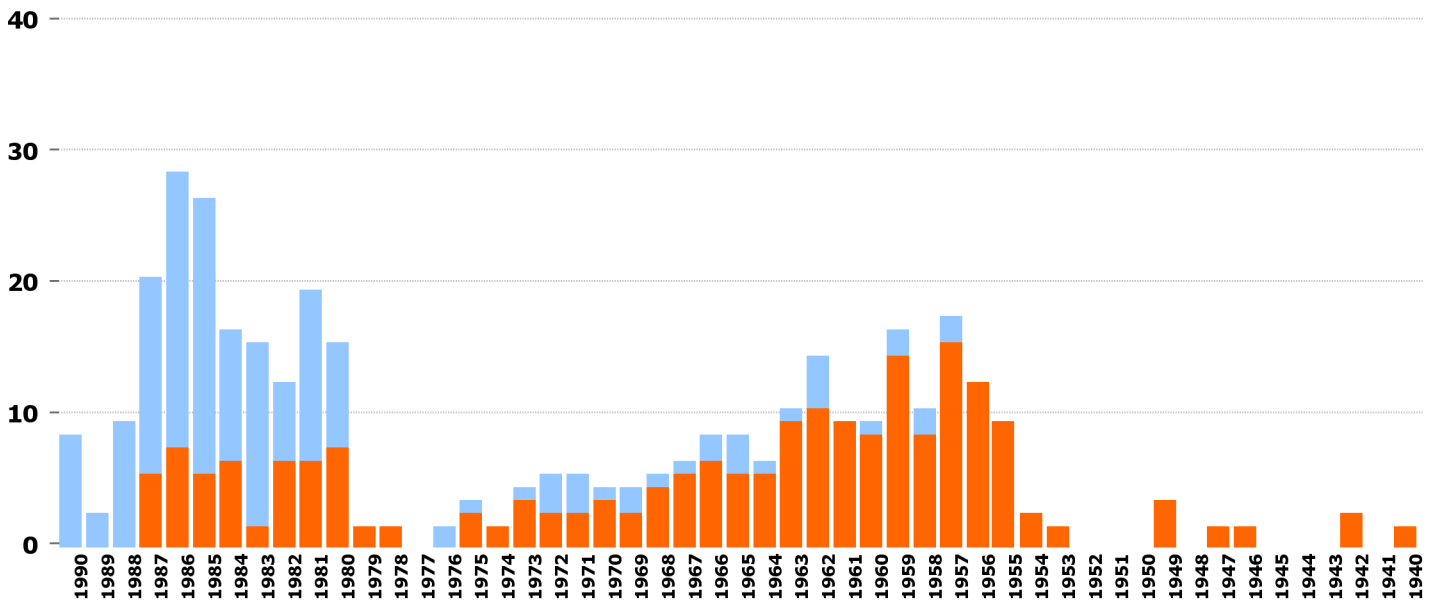
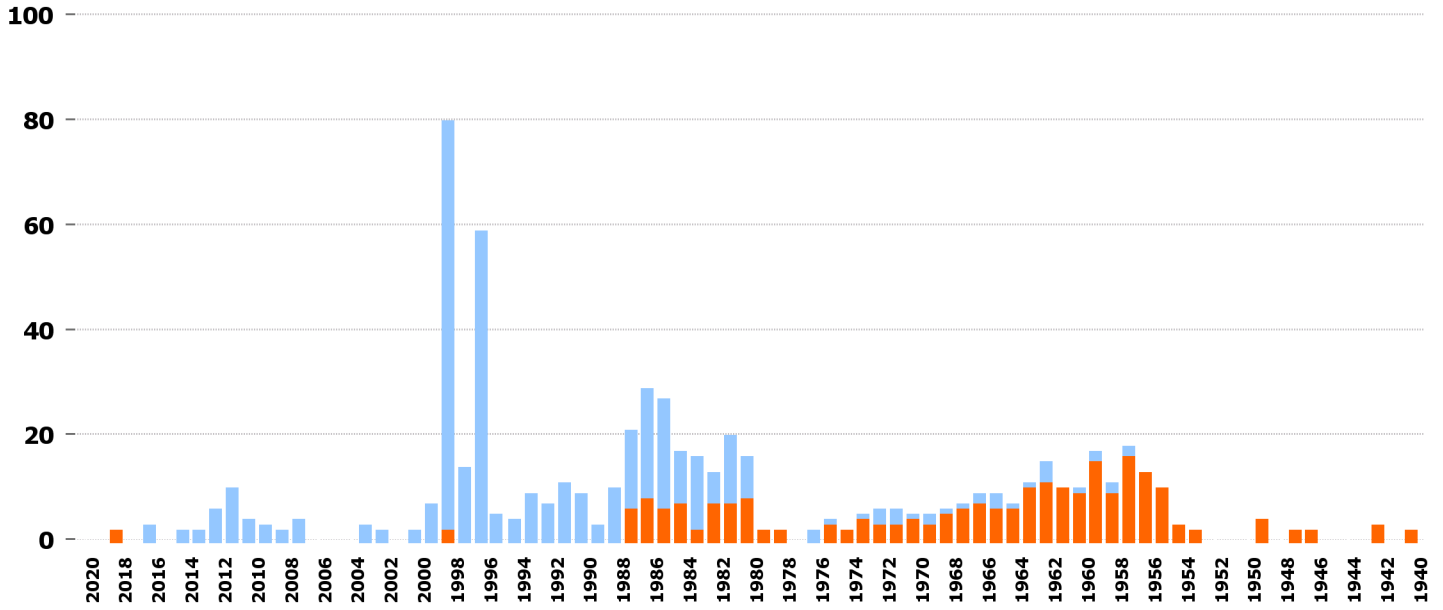


1940 1939 1938 1937 1936 1935 1934 1933 1932 1931 1930 1929 1928 1927 1926 1925 1924 1923 1922 1921 1920 1919 1918 1917 1916 1915 1914 1913 1912 1911 1910 1909 1908 1907 1906 1905 1904 1903 1902 1901 1900 1899 1898 1897 1896 1895 1894 1893 1892 1891 1890

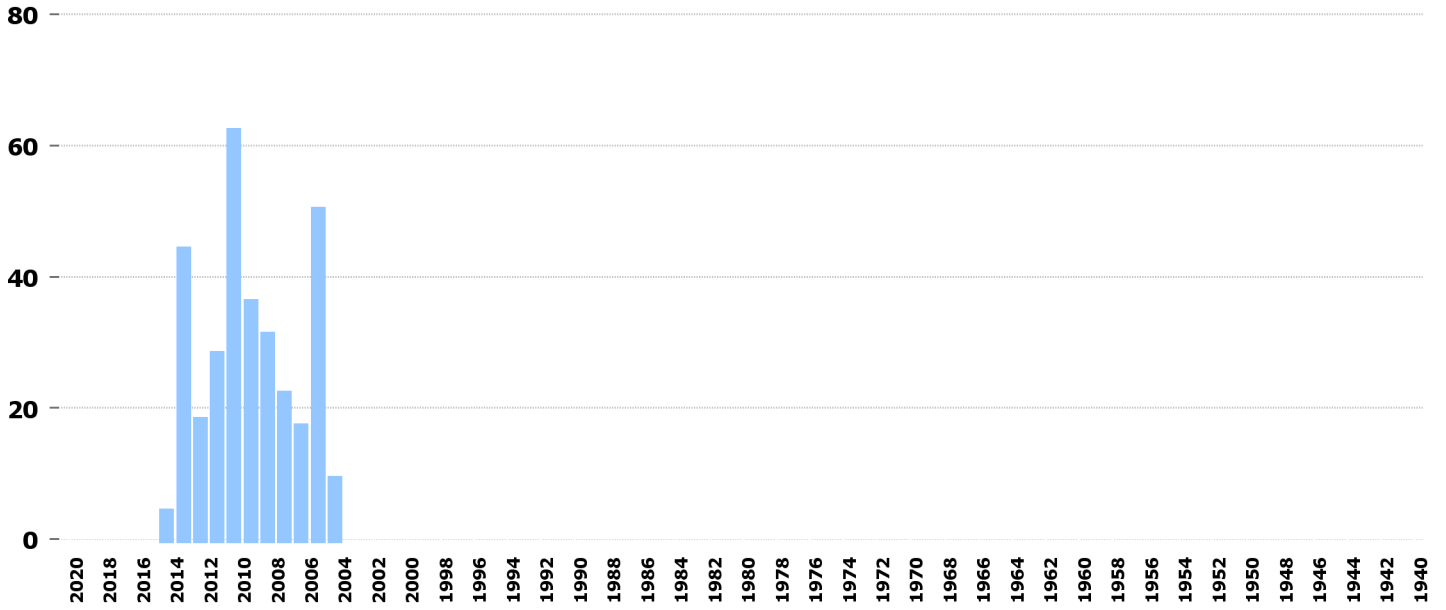
02 Schwerer Personenwagen



62 Motorrad-Dreirad



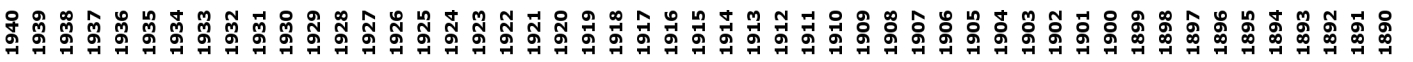
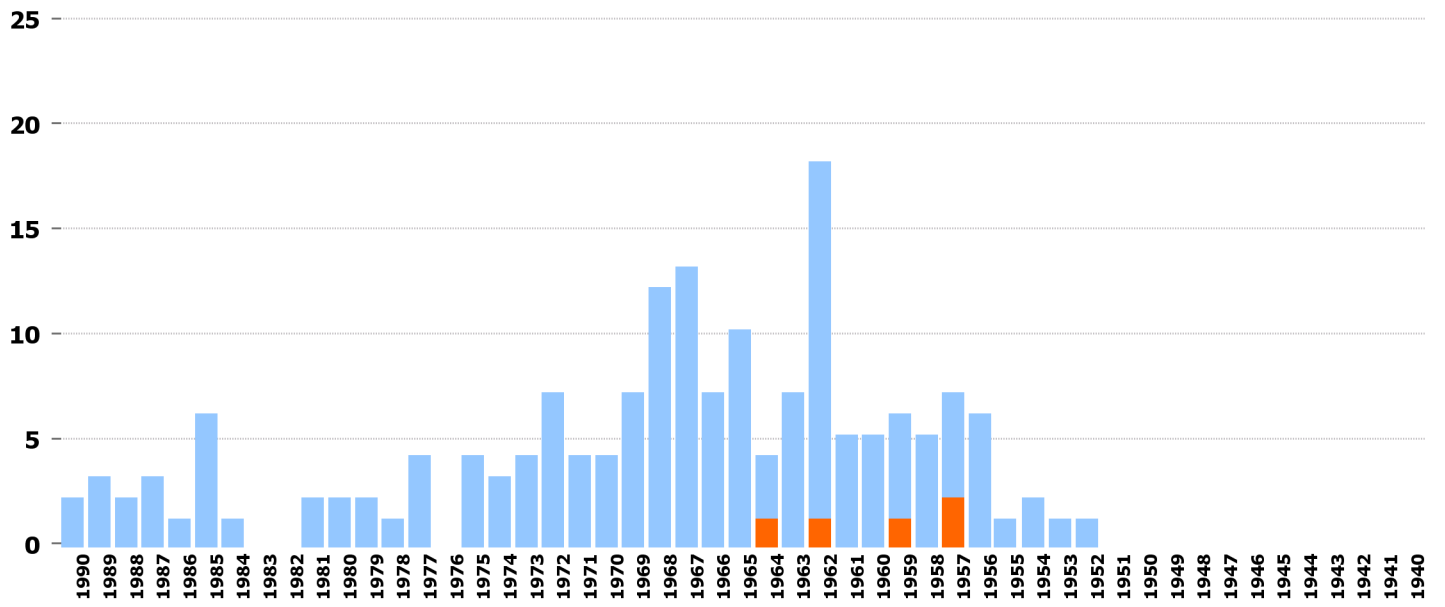
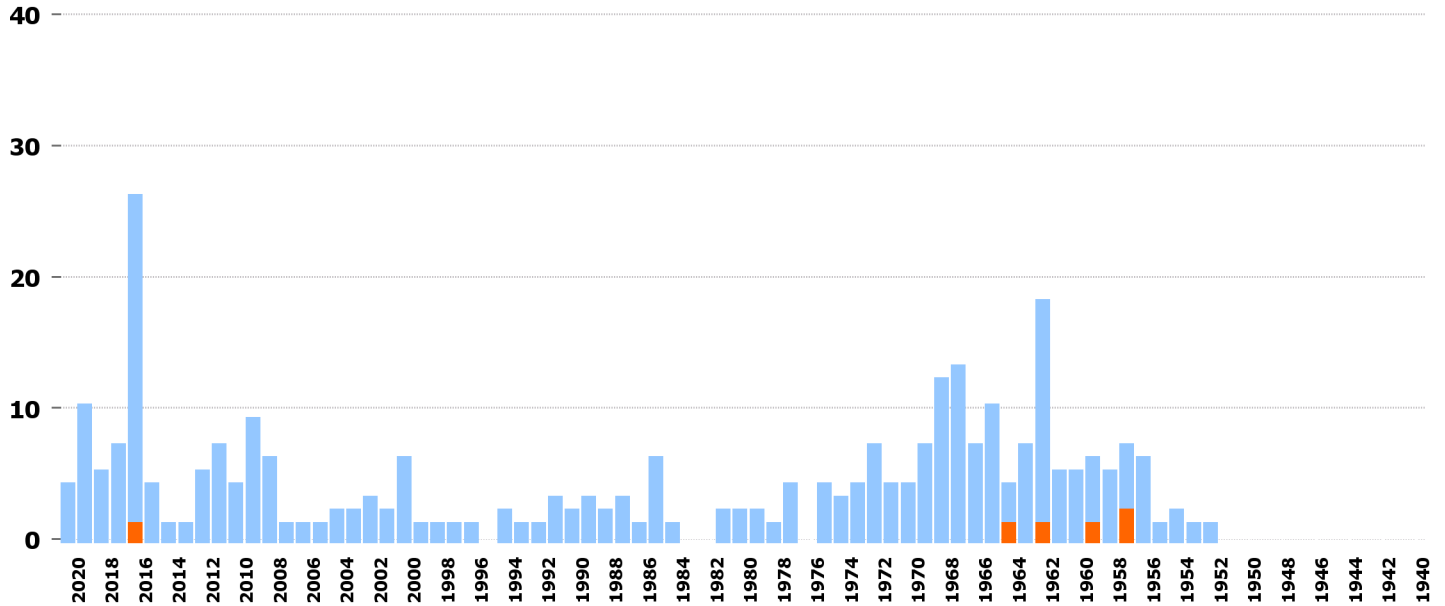
24 Gelenktrolleybus



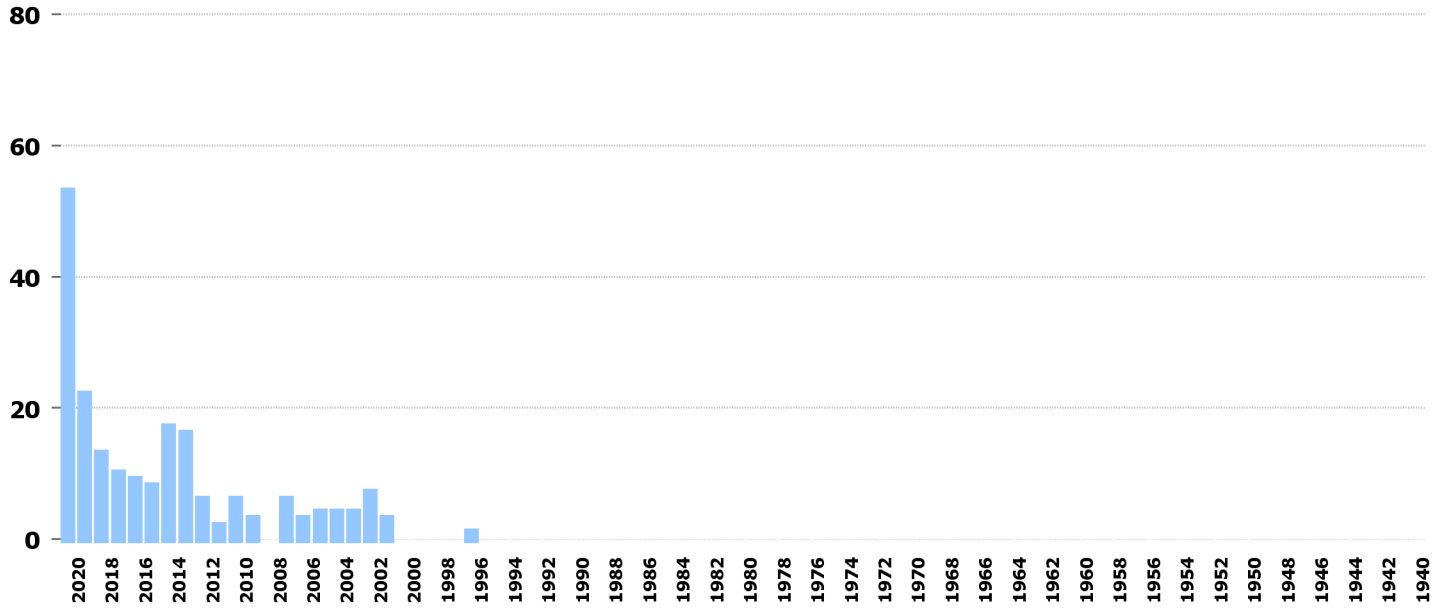
1990
1989
1988
1987
1986
1985
1984
1983
1982
1981
1980
1979
1978
1977
1976
1975
1974
1973
1972
1971
1970
1969
1968
1967
1966
1965
1964
1963
1962
1961
1960
1959
1958
1957
1956
1955
1954
1953
1952
1951
1950
1949
1948
1947
1946
1945
1944
1943
1942
1941
1940

1940
1939
1938
1937
1936
1935
1934
1933
1932
1931
1930
1929
1928
1927
1926
1925
1924
1923
1922
1921
1920
1919
1918
1917
1916
1915
1914
1913
1912
1911
1910
1909
1908
1907
1906
1905
1904
1903
1902
1901
1900
1899
1898
1897
1896
1895
1894
1893
1892
1891
1890

82 Motoreinachser



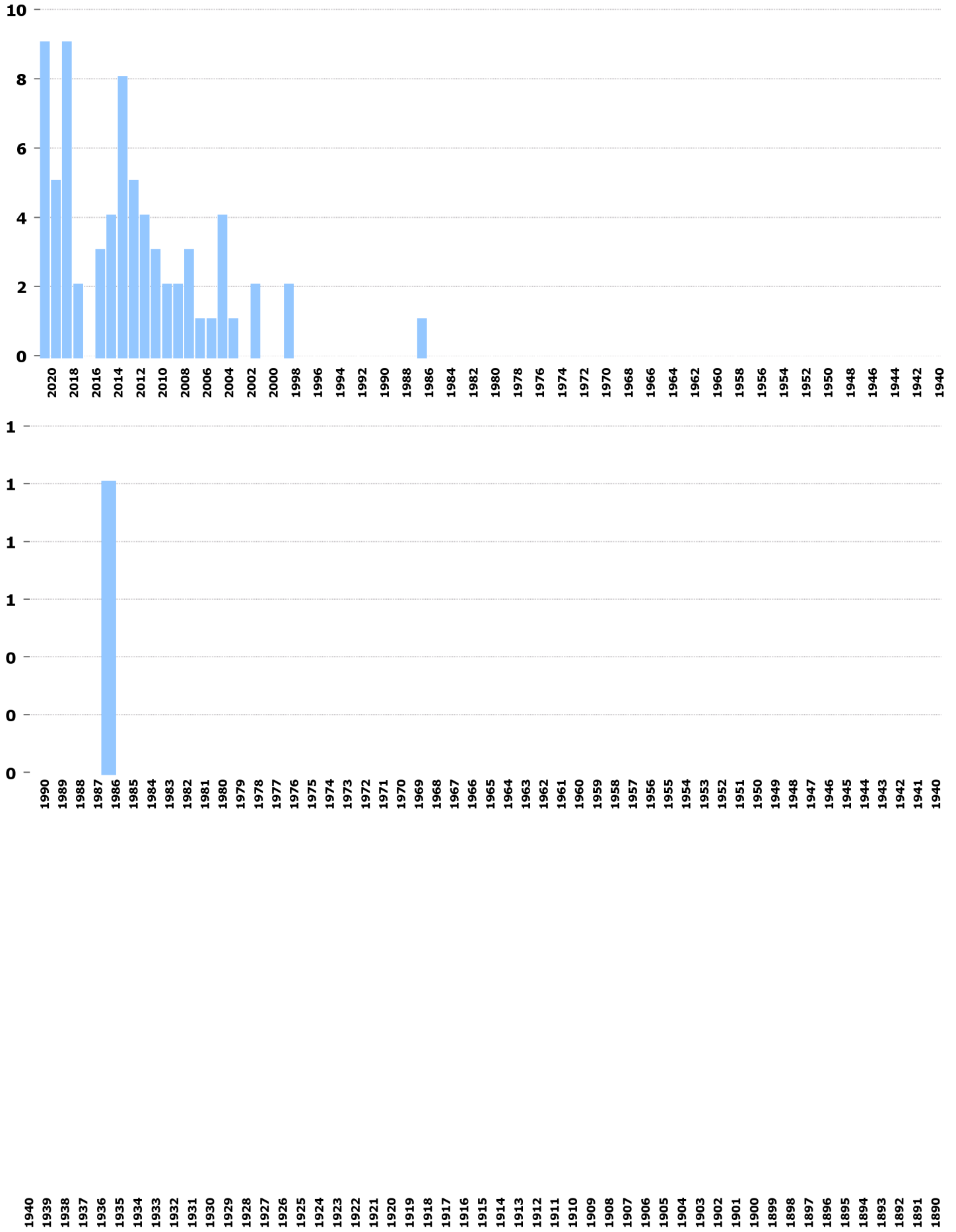
65 Leichtmotorfahrzeug



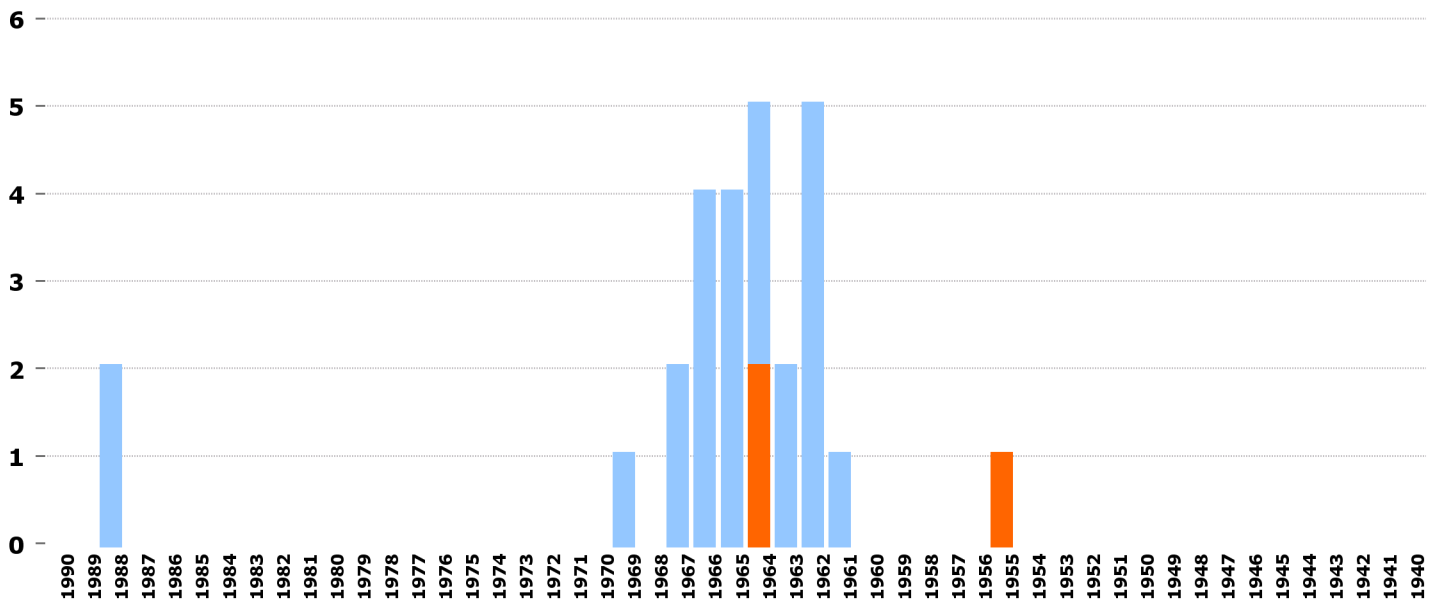
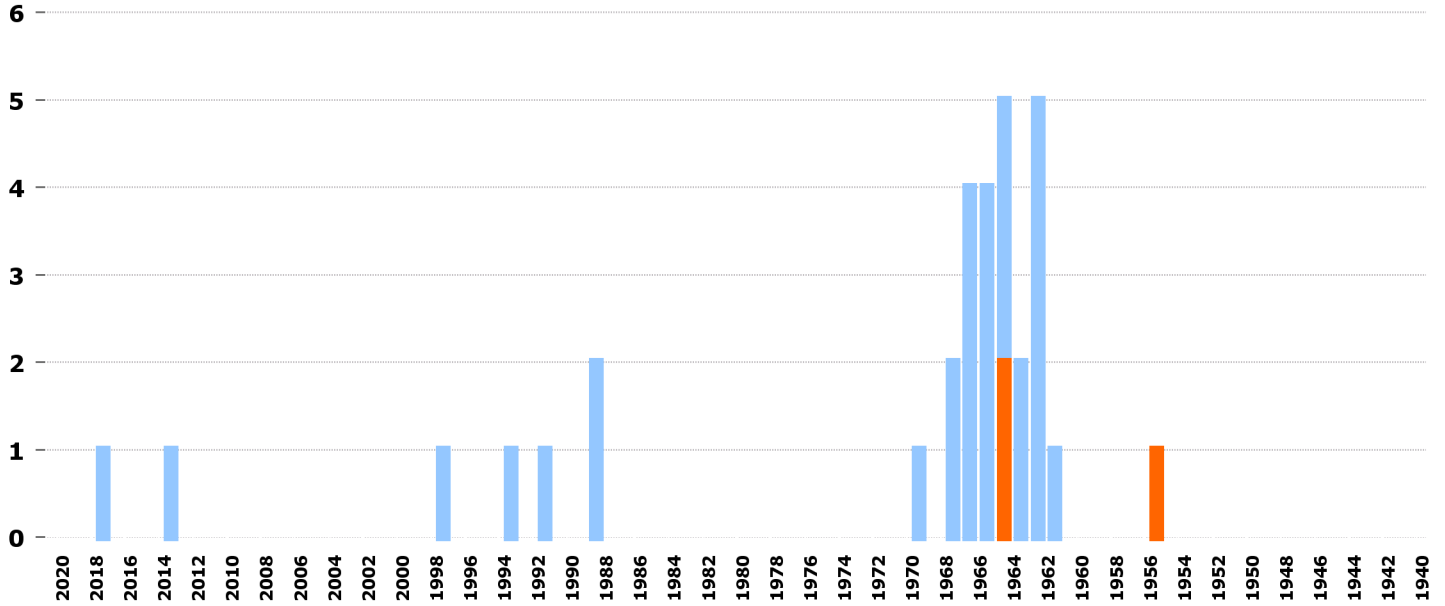
1990
1989
1988
1987
1986
1985
1984
1983
1982
1981
1980
1979
1978
1977
1976
1975
1974
1973
1972
1971
1970
1969
1968
1967
1966
1965
1964
1963
1962
1961
1960
1959
1958
1957
1956
1955
1954
1953
1952
1951
1950
1949
1948
1947
1946
1945
1944
1943
1942
1941
1940

1940
1939
1938
1937
1936
1935
1934
1933
1932
1931
1930
1929
1928
1927
1926
1925
1924
1923
1922
1921
1920
1919
1918
1917
1916
1915
1914
1913
1912
1911
1910
1909
1908
1907
1906
1905
1904
1903
1902
1901
1900
1899
1898
1897
1896
1895
1894
1893
1892
1891
1890

37 Schweres Sattelmotorfahrzeug



84 Landw. Kombinations-Fahrzeug



1940 1939 1938 1937 1936 1935 1934 1933 1932 1931 1930 1929 1928 1927 1926 1925 1924 1923 1922 1921 1920 1919 1918 1917 1916 1915 1914 1913 1912 1911 1910 1909 1908 1907 1906 1905 1904 1903 1902 1901 1900 1899 1898 1897 1896 1895 1894 1893 1892 1891 1890

36 Leichtes Sattelmotorfahrzeug



1990
1989
1988
1987
1986
1985
1984
1983
1982
1981
1980
1979
1978
1977
1976
1975
1974
1973
1972
1971
1970
1969
1968
1967
1966
1965
1964
1963
1962
1961
1960
1959
1958
1957
1956
1955
1954
1953
1952
1951
1950
1949
1948
1947
1946
1945
1944
1943
1942
1941
1940

1940
1939
1938
1937
1936
1935
1934
1933
1932
1931
1930
1929
1928
1927
1926
1925
1924
1923
1922
1921
1920
1919
1918
1917
1916
1915
1914
1913
1912
1911
1910
1909
1908
1907
1906
1905
1904
1903
1902
1901
1900
1899
1898
1897
1896
1895
1894
1893
1892
1891
1890